

Product datasheet for TA333467

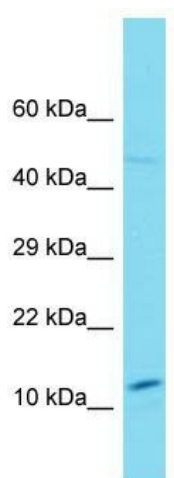
SNX20 Rabbit Polyclonal Antibody

Product data:

Product Type:	Primary Antibodies
Applications:	WB
Recommended Dilution:	WB
Reactivity:	Human
Host:	Rabbit
Isotype:	IgG
Clonality:	Polyclonal
Immunogen:	The immunogen for Anti-SNX20 Antibody is: synthetic peptide directed towards the N-terminal region of Human SNX20. Synthetic peptide located within the following region: GHLDTHSGLSSNSSMTTRELQQYWQNQKCRWKHVKLLFEIASARIEERKV
Formulation:	Liquid. Purified antibody supplied in 1x PBS buffer with 0.09% (w/v) sodium azide and 2% sucrose.
Purification:	Affinity Purified
Conjugation:	Unconjugated
Storage:	Store at -20°C as received.
Stability:	Stable for 12 months from date of receipt.
Predicted Protein Size:	14 kDa
Gene Name:	sorting nexin 20
Database Link:	NP_699168 Entrez Gene 124460 Human Q7Z614
Background:	SNX20 interacts with the cytoplasmic domain of PSGL1 and cycles PSGL1 into endosomes.
Synonyms:	SLIC1
Note:	Immunogen sequence homology: Human: 100%; Pig: 93%; Rat: 93%; Horse: 93%; Bovine: 93%; Mouse: 92%; Rabbit: 92%; Guinea pig: 86%; Dog: 79%



[View online »](#)

Product images:

Host: Rabbit; Target Name: SNX20; Sample
Tissue: U937 Whole Cell lysates; Antibody
Dilution: 1.0 ug/ml.