

## Product datasheet for **TA333465**

### SLC24A4 Rabbit Polyclonal Antibody

#### Product data:

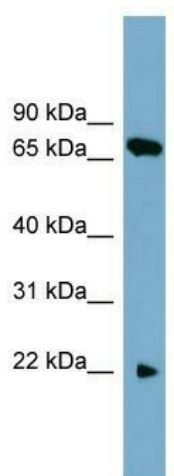
Product Type:	Primary Antibodies
Applications:	WB
Recommended Dilution:	WB
Reactivity:	Human
Host:	Rabbit
Isotype:	IgG
Clonality:	Polyclonal
Immunogen:	The immunogen for Anti-SLC24A4 Antibody: synthetic peptide directed towards the N terminal of human SLC24A4. Synthetic peptide located within the following region: PSLEKICERLHLSSEVAGATFMAAGSSTPELFASVIGVFITHGDVGVGTI
Formulation:	Liquid. Purified antibody supplied in 1x PBS buffer with 0.09% (w/v) sodium azide and 2% sucrose. <i>Note that this product is shipped as lyophilized powder to China customers.</i>
Purification:	Affinity Purified
Conjugation:	Unconjugated
Storage:	Store at -20°C as received.
Stability:	Stable for 12 months from date of receipt.
Predicted Protein Size:	65 kDa
Gene Name:	solute carrier family 24 member 4
Database Link:	<a href="#">NP_705932</a> <a href="#">Entrez Gene 123041 Human</a> <a href="#">Q8NFF2</a>
Background:	Potassium-dependent sodium/calcium exchangers, such as NCKX4, are thought to transport 1 intracellular calcium and 1 potassium ion in exchange for 4 extracellular sodium ions (Li et al., 2002 [PubMed 12379639]).
Synonyms:	AI2A5; NCKX4; SHEP6; SLC24A2
Note:	Immunogen sequence homology: Dog: 100%; Pig: 100%; Rat: 100%; Horse: 100%; Human: 100%; Mouse: 100%; Bovine: 100%; Rabbit: 100%; Guinea pig: 100%; Zebrafish: 93%



[View online »](#)

Protein Families: Druggable Genome, Transmembrane

### Product images:



WB Suggested Anti-SLC24A4 Antibody Titration:  
0.2-1 ug/ml; Positive Control: HT1080 cell lysate