

Product datasheet for **TA333463**

MLX Rabbit Polyclonal Antibody

Product data:

Product Type:	Primary Antibodies
Applications:	WB
Recommended Dilution:	WB
Reactivity:	Mouse, Human
Host:	Rabbit
Isotype:	IgG
Clonality:	Polyclonal
Immunogen:	The immunogen for Anti-MLX Antibody: synthetic peptide directed towards the C terminal of human MLX. Synthetic peptide located within the following region: LRKDVTALKIMKVNYEQIVKAHQDNPHEGEDQVSDQVKFNVFQGIMDSLF
Formulation:	Liquid. Purified antibody supplied in 1x PBS buffer with 0.09% (w/v) sodium azide and 2% sucrose. <i>Note that this product is shipped as lyophilized powder to China customers.</i>
Purification:	Affinity Purified
Conjugation:	Unconjugated
Storage:	Store at -20°C as received.
Stability:	Stable for 12 months from date of receipt.
Predicted Protein Size:	33 kDa
Gene Name:	MLX, MAX dimerization protein
Database Link:	NP_733752 Entrez Gene 21428 Mouse Entrez Gene 6945 Human Q9UH92



[View online »](#)

Background:

MLX belongs to the family of basic helix-loop-helix leucine zipper (bHLH-Zip) transcription factors. These factors form heterodimers with Mad proteins and play a role in proliferation, determination and differentiation. MLX may act to diversify Mad family function by its restricted association with a subset of the Mad family of transcriptional repressors, namely, Mad1 and Mad4. The product of this gene belongs to the family of basic helix-loop-helix leucine zipper (bHLH-Zip) transcription factors. These factors form heterodimers with Mad proteins and play a role in proliferation, determination and differentiation. This gene product may act to diversify Mad family function by its restricted association with a subset of the Mad family of transcriptional repressors, namely, Mad1 and Mad4. Alternatively spliced transcript variants encoding different isoforms have been identified for this gene.

Synonyms:

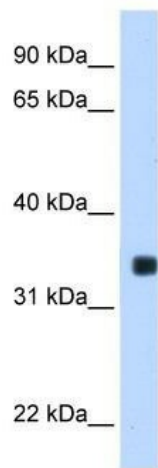
bHLHd13; MAD7; MXD7; TCFL4

Note:

Immunogen sequence homology: Dog: 100%; Pig: 100%; Rat: 100%; Goat: 100%; Horse: 100%; Human: 100%; Mouse: 100%; Bovine: 100%; Rabbit: 86%

Protein Families:

Druggable Genome, Transcription Factors

Product images:

WB Suggested Anti-MLX Antibody Titration: 0.2-1 ug/ml; Positive Control: Transfected 293T