

Product datasheet for TA333462

Zc3h3 Rabbit Polyclonal Antibody

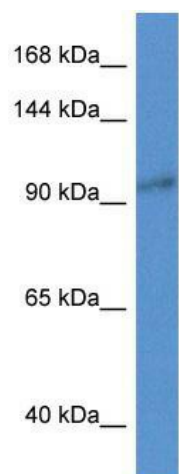
Product data:

Product Type:	Primary Antibodies
Applications:	WB
Recommended Dilution:	WB
Reactivity:	Mouse
Host:	Rabbit
Isotype:	IgG
Clonality:	Polyclonal
Immunogen:	The immunogen for Anti-Zc3h3 Antibody: synthetic peptide corresponding to a region of Mouse. Synthetic peptide located within the following region: KEQLRRQIRLLQGLIDDYKTLHGNGPALGNSSATRWQPPMFPGGRTFGAR
Formulation:	Liquid. Purified antibody supplied in 1x PBS buffer with 0.09% (w/v) sodium azide and 2% sucrose.
Purification:	Affinity Purified
Conjugation:	Unconjugated
Storage:	Store at -20°C as received.
Stability:	Stable for 12 months from date of receipt.
Predicted Protein Size:	105 kDa
Gene Name:	zinc finger CCCH type containing 3
Database Link:	NP_742119 Entrez Gene 223642 Mouse Q8CHP0
Background:	The function of this protein remains unknown.
Synonyms:	KIAA0150; ZC3HDC3
Note:	Immunogen sequence homology: Rat: 100%; Human: 100%; Mouse: 100%; Bovine: 92%; Horse: 91%; Pig: 86%; Guinea pig: 86%



[View online »](#)

Product images:



WB Suggested Anti-Zc3h3 Antibody; Titration: 1.0 ug/ml; Positive Control: Mouse Pancreas