

## Product datasheet for **TA333461**

### SLC35C2 Rabbit Polyclonal Antibody

#### Product data:

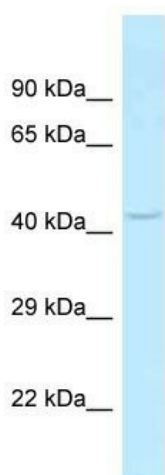
Product Type:	Primary Antibodies
Applications:	WB
Recommended Dilution:	WB
Reactivity:	Mouse
Host:	Rabbit
Isotype:	IgG
Clonality:	Polyclonal
Immunogen:	The immunogen for Anti-Slc35c2 Antibody is: synthetic peptide directed towards the C-terminal region of MOUSE Slc35c2. Synthetic peptide located within the following region: QDTGLLLWVLGSLLLGGILAFGLGFSEFLLVSRSSLTLSIAGIFKEVCT
Formulation:	Liquid. Purified antibody supplied in 1x PBS buffer with 0.09% (w/v) sodium azide and 2% sucrose. <i>Note that this product is shipped as lyophilized powder to China customers.</i>
Purification:	Affinity Purified
Conjugation:	Unconjugated
Storage:	Store at -20°C as received.
Stability:	Stable for 12 months from date of receipt.
Predicted Protein Size:	40 kDa
Gene Name:	solute carrier family 35 member C2
Database Link:	<a href="#">NP_775271</a> <a href="#">Entrez Gene 51006 Human</a> <a href="#">Q9NQQ7</a>
Background:	The function of this protein remains unknown.
Synonyms:	BA394O2.1; C20orf5; CGI-15; OVCOV1
Note:	Immunogen sequence homology: Dog: 100%; Pig: 100%; Rat: 100%; Horse: 100%; Human: 100%; Mouse: 100%; Yeast: 100%; Bovine: 100%; Rabbit: 100%; Zebrafish: 100%; Guinea pig: 100%



[View online »](#)

Protein Families: Druggable Genome, Transmembrane

### Product images:



Host: Rabbit  
Target Name: Slc35c2  
Sample Tissue: Mouse Liver Lysate  
Antibody Dilution: 1.0 $\mu$ g/ml

Host: Rabbit; Target Name: Slc35c2; Sample Tissue: Mouse Liver lysates; Antibody Dilution: 1.0 ug/ml