

Product datasheet for **TA333460**

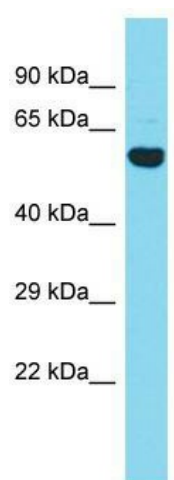
CCDC149 Rabbit Polyclonal Antibody

Product data:

| | |
|-------------------------|--|
| Product Type: | Primary Antibodies |
| Applications: | WB |
| Recommended Dilution: | WB |
| Reactivity: | Human |
| Host: | Rabbit |
| Isotype: | IgG |
| Clonality: | Polyclonal |
| Immunogen: | The immunogen for Anti-CCDC149 Antibody is: synthetic peptide directed towards the N-terminal region of Human CCDC149. Synthetic peptide located within the following region: HFAAHEREDLVQQLERAKEQIESLEHDLQASVDELQDVKEERSSYQDKVE |
| Formulation: | Liquid. Purified antibody supplied in 1x PBS buffer with 0.09% (w/v) sodium azide and 2% sucrose. |
| Purification: | Affinity Purified |
| Conjugation: | Unconjugated |
| Storage: | Store at -20°C as received. |
| Stability: | Stable for 12 months from date of receipt. |
| Predicted Protein Size: | 58 kDa |
| Gene Name: | coiled-coil domain containing 149 |
| Database Link: | NP_775734 Entrez Gene 91050 Human Q6ZUS6 |
| Background: | The function of this protein remains unknown. |
| Synonyms: | DKFZp761B107; FLJ13410 |
| Note: | Immunogen sequence homology: Dog: 100%; Pig: 100%; Horse: 100%; Human: 100%; Bovine: 100%; Rat: 93%; Mouse: 93%; Rabbit: 93%; Guinea pig: 93% |


[View online »](#)

Product images:



Host: Rabbit; Target Name: CCDC149; Sample
Tissue: Fetal Heart lysates; Antibody Dilution: 1.0
ug/ml.