

Product datasheet for **TA333459**

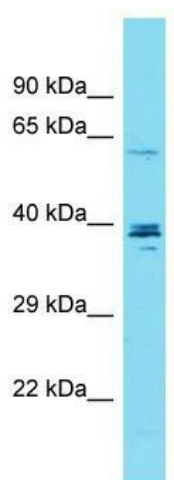
CCDC149 Rabbit Polyclonal Antibody

Product data:

Product Type:	Primary Antibodies
Applications:	WB
Recommended Dilution:	WB
Reactivity:	Human
Host:	Rabbit
Isotype:	IgG
Clonality:	Polyclonal
Immunogen:	The immunogen for Anti-CCDC149 Antibody is: synthetic peptide directed towards the C-terminal region of Human CCDC149. Synthetic peptide located within the following region: LLKFVEQPTENKADPKDGAEQKQEEDESCAAAEEALTAPEDAGRPAVNSPA
Formulation:	Liquid. Purified antibody supplied in 1x PBS buffer with 0.09% (w/v) sodium azide and 2% sucrose. <i>Note that this product is shipped as lyophilized powder to China customers.</i>
Purification:	Affinity Purified
Conjugation:	Unconjugated
Storage:	Store at -20°C as received.
Stability:	Stable for 12 months from date of receipt.
Predicted Protein Size:	58 kDa
Gene Name:	coiled-coil domain containing 149
Database Link:	NP_775734 Entrez Gene 91050 Human Q6ZUS6
Background:	The function of this protein remains unknown.
Synonyms:	DKFZp761B107; FLJ13410
Note:	Immunogen sequence homology: Human: 100%; Pig: 86%; Horse: 86%; Guinea pig: 79%



[View online »](#)

Product images:

Host: Rabbit; Target Name: CCDC149; Sample Tissue: OVCAR-3 Whole Cell lysates; Antibody Dilution: 1.0 ug/ml.