

## Product datasheet for **TA333458**

### SLC25A26 Rabbit Polyclonal Antibody

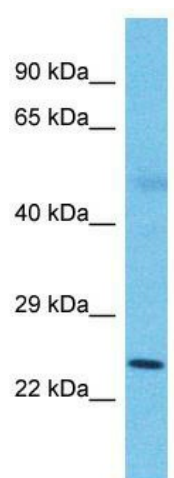
#### Product data:

Product Type:	Primary Antibodies
Applications:	WB
Recommended Dilution:	WB
Reactivity:	Human
Host:	Rabbit
Isotype:	IgG
Clonality:	Polyclonal
Immunogen:	The immunogen for Anti-SLC25A26 Antibody is: synthetic peptide directed towards the N-terminal region of Human SLC25A26. Synthetic peptide located within the following region: VDLILFPLDTIKTRLQSPQGFKAGGFHGIYAGVPSAAIGSFPNAAAFI
Formulation:	Liquid. Purified antibody supplied in 1x PBS buffer with 0.09% (w/v) sodium azide and 2% sucrose.
Purification:	Affinity Purified
Conjugation:	Unconjugated
Storage:	Store at -20°C as received.
Stability:	Stable for 12 months from date of receipt.
Predicted Protein Size:	29 kDa
Gene Name:	solute carrier family 25 member 26
Database Link:	<a href="#">NP_775742</a> <a href="#">Entrez Gene 115286 Human</a> <a href="#">Q70HW3</a>
Background:	Mitochondrial carriers, including SLC25A26, are a family of transport proteins found mostly in the inner membranes of mitochondria. They shuttle metabolites and cofactors through the mitochondrial membrane.
Synonyms:	COXPD28; SAMC
Note:	Immunogen sequence homology: Dog: 100%; Pig: 100%; Human: 100%; Mouse: 100%; Rabbit: 100%; Rat: 93%; Sheep: 93%; Bovine: 93%; Guinea pig: 93%; Zebrafish: 86%; Yeast: 79%



[View online »](#)

## Product images:



Host: Rabbit; Target Name: SLC25A26; Sample  
Tissue: Lung Tumor lysates; Antibody Dilution: 1.0  
ug/ml