

## Product datasheet for **TA333457**

### VKORC1L1 Rabbit Polyclonal Antibody

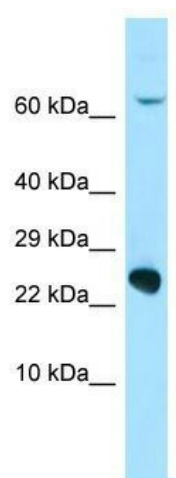
#### Product data:

Product Type:	Primary Antibodies
Applications:	WB
Recommended Dilution:	WB
Reactivity:	Human
Host:	Rabbit
Isotype:	IgG
Clonality:	Polyclonal
Immunogen:	The immunogen for Anti-VKORC1L1 Antibody is: synthetic peptide directed towards the C-terminal region of Human VKORC1L1. Synthetic peptide located within the following region: LAYILYFVLKEFCIICIVTYVLNFKLLIINYKRLVYLNEAWKRQLQPKQD
Formulation:	Liquid. Purified antibody supplied in 1x PBS buffer with 0.09% (w/v) sodium azide and 2% sucrose. <i>Note that this product is shipped as lyophilized powder to China customers.</i>
Purification:	Affinity Purified
Conjugation:	Unconjugated
Storage:	Store at -20°C as received.
Stability:	Stable for 12 months from date of receipt.
Predicted Protein Size:	19 kDa
Gene Name:	vitamin K epoxide reductase complex subunit 1 like 1
Database Link:	<a href="#">NP_775788</a> <a href="#">Entrez Gene 154807 Human</a> <a href="#">Q8N0U8</a>
Background:	The function of this protein remains unknown.
Synonyms:	DKFZp762H0113
Note:	Immunogen sequence homology: Dog: 100%; Pig: 100%; Rat: 100%; Horse: 100%; Human: 100%; Bovine: 100%; Rabbit: 100%; Guinea pig: 100%; Mouse: 93%; Zebrafish: 79%
Protein Families:	Transmembrane



[View online »](#)

## Product images:



WB Suggested Anti-VKORC1L1 Antibody;  
Titration: 1.0 ug/ml; Positive Control: HepG2  
Whole Cell