

## Product datasheet for **TA333456**

### XKR6 Rabbit Polyclonal Antibody

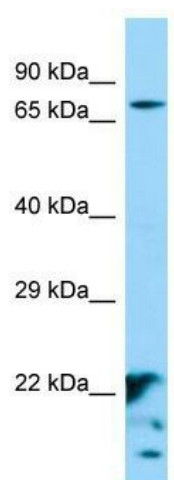
#### Product data:

Product Type:	Primary Antibodies
Applications:	WB
Recommended Dilution:	WB
Reactivity:	Human
Host:	Rabbit
Isotype:	IgG
Clonality:	Polyclonal
Immunogen:	The immunogen for Anti-XKR6 Antibody is: synthetic peptide directed towards the middle region of Human XKR6. Synthetic peptide located within the following region: RTMYLGIQSQRKEHQRRFYWAMMYEYADVNMRLLETFLFLESAPQLVLQL
Formulation:	Liquid. Purified antibody supplied in 1x PBS buffer with 0.09% (w/v) sodium azide and 2% sucrose.
Purification:	Affinity Purified
Conjugation:	Unconjugated
Storage:	Store at -20°C as received.
Stability:	Stable for 12 months from date of receipt.
Predicted Protein Size:	70 kDa
Gene Name:	XK related 6
Database Link:	<a href="#">NP_775954</a> <a href="#">Entrez Gene 286046 Human</a> <a href="#">Q5GH73</a>
Background:	The function of this protein remains unknown.
Synonyms:	C8orf5; C8orf7; C8orf21; XRG6
Note:	Immunogen sequence homology: Pig: 100%; Human: 100%; Dog: 93%; Rat: 93%; Mouse: 93%; Bovine: 93%; Guinea pig: 93%; Rabbit: 86%; Zebrafish: 79%
Protein Families:	Transmembrane



[View online »](#)

## Product images:



Host: Rabbit; Target Name: XKR6; Sample Tissue: HepG2 whole cell lysates; Antibody Dilution: 1.0 ug/ml