

Product datasheet for **TA333453**

CLBA1 Rabbit Polyclonal Antibody

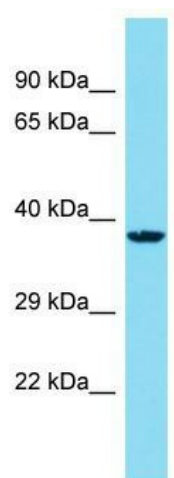
Product data:

Product Type:	Primary Antibodies
Applications:	WB
Recommended Dilution:	WB
Reactivity:	Human
Host:	Rabbit
Isotype:	IgG
Clonality:	Polyclonal
Immunogen:	The immunogen for Anti-C14orf79 Antibody is: synthetic peptide directed towards the N-terminal region of Human C14orf79. Synthetic peptide located within the following region: PDPGEHSSTWGEFEGFRESSAKSGQFSQSLELLEGPTQPRTTSAPKE
Formulation:	Liquid. Purified antibody supplied in 1x PBS buffer with 0.09% (w/v) sodium azide and 2% sucrose. <i>Note that this product is shipped as lyophilized powder to China customers.</i>
Purification:	Affinity Purified
Conjugation:	Unconjugated
Storage:	Store at -20°C as received.
Stability:	Stable for 12 months from date of receipt.
Predicted Protein Size:	35 kDa
Gene Name:	chromosome 14 open reading frame 79
Database Link:	NP_777551 Entrez Gene 122616 Human Q96F83
Background:	The function of this protein remains unknown.
Synonyms:	chromosome 14 open reading frame 79
Note:	Immunogen sequence homology: Human: 100%



[View online »](#)

Product images:



Host: Rabbit; Target Name: C14orf79; Sample
Tissue: HepG2 Whole Cell lysates; Antibody
Dilution: 1.0 ug/ml.