

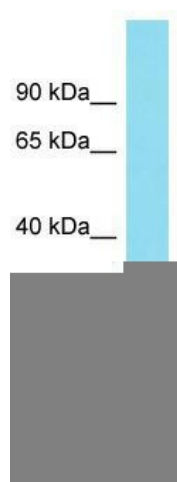
## Product datasheet for TA333452

### RNF151 Rabbit Polyclonal Antibody

#### Product data:

Product Type:	Primary Antibodies
Applications:	WB
Recommended Dilution:	WB
Reactivity:	Human
Host:	Rabbit
Isotype:	IgG
Clonality:	Polyclonal
Immunogen:	The immunogen for Anti-RNF151 Antibody is: synthetic peptide directed towards the middle region of Human RNF151. Synthetic peptide located within the following region: AHRKGHQDSCPFLTACPNEGCTSQVPRGTAEHRQHCQGSQQRCPGCG
Formulation:	Liquid. Purified antibody supplied in 1x PBS buffer with 0.09% (w/v) sodium azide and 2% sucrose.
Purification:	Affinity Purified
Conjugation:	Unconjugated
Storage:	Store at -20°C as received.
Stability:	Stable for 12 months from date of receipt.
Predicted Protein Size:	27 kDa
Gene Name:	ring finger protein 151
Database Link:	<a href="#">NP_777563</a> <a href="#">Entrez Gene 146310 Human</a> <a href="#">Q2KHN1</a>
Background:	RNF151 may be involved in acrosome formation of spermatids.
Synonyms:	MGC129921
Note:	Immunogen sequence homology: Pig: 100%; Rat: 100%; Horse: 100%; Human: 100%; Bovine: 100%; Guinea pig: 100%; Dog: 92%; Mouse: 92%
Protein Families:	Druggable Genome


[View online »](#)

**Product images:**


Host: Rabbit; Target Name: RNF151; Sample  
Tissue: THP-1 Whole Cell lysates; Antibody  
Dilution: 1.0 ug/ml.