

Product datasheet for **TA333451**

SEC14L4 Rabbit Polyclonal Antibody

Product data:

Product Type:	Primary Antibodies
Applications:	WB
Recommended Dilution:	WB
Reactivity:	Human
Host:	Rabbit
Isotype:	IgG
Clonality:	Polyclonal
Immunogen:	The immunogen for Anti-SEC14L4 Antibody: synthetic peptide directed towards the N terminal of human SEC14L4. Synthetic peptide located within the following region: MSSRVGDLSPQQEALARFRENLQDLLPILPNADDYFLLRWLRARNFDLQ
Formulation:	Liquid. Purified antibody supplied in 1x PBS buffer with 0.09% (w/v) sodium azide and 2% sucrose. <i>Note that this product is shipped as lyophilized powder to China customers.</i>
Purification:	Affinity Purified
Conjugation:	Unconjugated
Storage:	Store at -20°C as received.
Stability:	Stable for 12 months from date of receipt.
Predicted Protein Size:	47 kDa
Gene Name:	SEC14 like lipid binding 4
Database Link:	NP_777637 Entrez Gene 284904 Human Q9UDX3



[View online »](#)

Background:

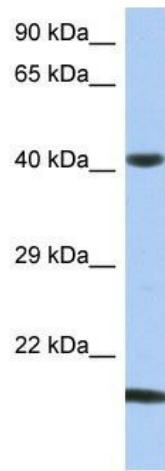
SEC14L4 is a probable hydrophobic ligand-binding protein; may play a role in the transport of hydrophobic ligands like tocopherol, squalene and phospholipids. The protein encoded by this gene is highly similar to the protein encoded by the *Saccharomyces cerevisiae* SEC14 gene. The SEC14 protein is a phosphatidylinositol transfer protein that is essential for biogenesis of Golgi-derived transport vesicles, and thus is required for the export of yeast secretory proteins from the Golgi complex. The specific function of this protein has not yet been determined.

Synonyms:

TAP3

Note:

Immunogen sequence homology: Rat: 100%; Horse: 100%; Human: 100%; Mouse: 100%; Dog: 86%; Pig: 86%; Bovine: 86%; Rabbit: 86%; Guinea pig: 86%

Product images:

WB Suggested Anti-SEC14L4 Antibody Titration:
0.2-1 ug/ml; ELISA Titer: 1:1562500; Positive
Control: OVCAR-3 cell lysate