

Product datasheet for **TA333450**

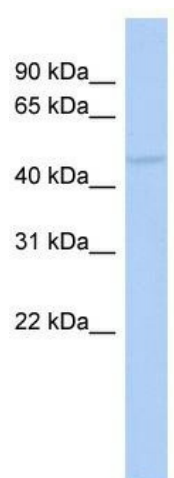
RASGEF1C Rabbit Polyclonal Antibody

Product data:

Product Type:	Primary Antibodies
Applications:	WB
Recommended Dilution:	WB
Reactivity:	Human
Host:	Rabbit
Isotype:	IgG
Clonality:	Polyclonal
Immunogen:	The immunogen for Anti-RASGEF1C Antibody: synthetic peptide directed towards the middle region of human RASGEF1C. Synthetic peptide located within the following region: FLELAKQVGEFITWKQVECPFEQDASITHYLYTAPIFSEDGLYLASYESE
Formulation:	Liquid. Purified antibody supplied in 1x PBS buffer with 0.09% (w/v) sodium azide and 2% sucrose. <i>Note that this product is shipped as lyophilized powder to China customers.</i>
Purification:	Affinity Purified
Conjugation:	Unconjugated
Storage:	Store at -20°C as received.
Stability:	Stable for 12 months from date of receipt.
Predicted Protein Size:	53 kDa
Gene Name:	RasGEF domain family member 1C
Database Link:	NP_778232 Entrez Gene 255426 Human Q8N431
Background:	RASGEF1C is the guanine nucleotide exchange factor (GEF).
Synonyms:	FLJ35841
Note:	Immunogen sequence homology: Rat: 100%; Horse: 100%; Human: 100%; Mouse: 100%; Bovine: 100%; Rabbit: 100%; Dog: 93%; Pig: 93%; Zebrafish: 93%; Guinea pig: 93%



[View online »](#)

Product images:

WB Suggested Anti-RASGEF1C Antibody Titration:
0.2-1 ug/ml; ELISA Titer: 1:1562500; Positive
Control: Human heart