

Product datasheet for **TA333448**

Lingo2 Rabbit Polyclonal Antibody

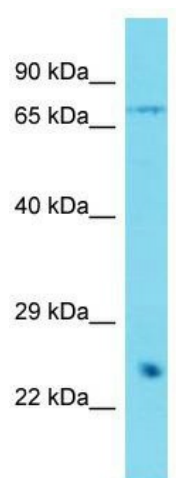
Product data:

Product Type:	Primary Antibodies
Applications:	WB
Recommended Dilution:	WB
Reactivity:	Mouse
Host:	Rabbit
Isotype:	IgG
Clonality:	Polyclonal
Immunogen:	The immunogen for Anti-Lingo2 Antibody is: synthetic peptide directed towards the C-terminal region of Mouse Lingo2. Synthetic peptide located within the following region: KTLIVSTAMGCFTFLGVVLFVWSRGGKHKNSIDLEYVPRKNNG
Formulation:	Liquid. Purified antibody supplied in 1x PBS buffer with 0.09% (w/v) sodium azide and 2% sucrose. <i>Note that this product is shipped as lyophilized powder to China customers.</i>
Purification:	Affinity Purified
Conjugation:	Unconjugated
Storage:	Store at -20°C as received.
Stability:	Stable for 12 months from date of receipt.
Predicted Protein Size:	67 kDa
Gene Name:	leucine rich repeat and Ig domain containing 2
Database Link:	NP_780725 Entrez Gene 242384 Mouse Q3URE9
Background:	The function of this protein remains unknown.
Synonyms:	FLJ31810; LERN3; LRRN6C; OTTHUMP00000021174
Note:	Immunogen sequence homology: Dog: 100%; Pig: 100%; Rat: 100%; Horse: 100%; Human: 100%; Mouse: 100%; Bovine: 100%; Guinea pig: 100%; Zebrafish: 86%



[View online »](#)

Product images:



Host: Rabbit; Target Name: Lingo2; Sample
Tissue: Mouse Heart lysates; Antibody Dilution:
1.0 ug/ml