

## Product datasheet for **TA333447**

### RHOC Rabbit Polyclonal Antibody

#### Product data:

Product Type:	Primary Antibodies
Applications:	IHC, WB
Recommended Dilution:	IHC, WB
Reactivity:	Human, Cow, Dog, Goat, Guinea Pig, Horse, Mouse, Rabbit, Rat, Sheep, Yeast, Zebrafish, Brugia malayi
Host:	Rabbit
Isotype:	IgG
Clonality:	Polyclonal
Immunogen:	The immunogen for Anti-RHOC Antibody: synthetic peptide directed towards the N terminal of human RHOC. Synthetic peptide located within the following region: VPTVFENYIADIEVDGKQVELALWDTAGQEDYDRLRPLSYPDTDVILMCF
Formulation:	Liquid. Purified antibody supplied in 1x PBS buffer with 0.09% (w/v) sodium azide and 2% sucrose. <i>Note that this product is shipped as lyophilized powder to China customers.</i>
Purification:	Affinity Purified
Conjugation:	Unconjugated
Storage:	Store at -20°C as received.
Stability:	Stable for 12 months from date of receipt.
Predicted Protein Size:	22 kDa
Gene Name:	ras homolog family member C
Database Link:	<a href="#">NP_786886</a> <a href="#">Entrez Gene 11853 Mouse</a> <a href="#">Entrez Gene 295342 Rat</a> <a href="#">Entrez Gene 389 Human</a> <a href="#">P08134</a>



[View online »](#)

**Background:**

RHOC is a member of the Rho family of small GTPases, which cycle between inactive GDP-bound and active GTP-bound states and function as molecular switches in signal transduction cascades. Rho proteins promote reorganization of the actin cytoskeleton and regulate cell shape, attachment, and motility. RHOC is prenylated at its C-terminus, and localizes to the cytoplasm and plasma membrane. It is thought to be important in cell locomotion. Overexpression of RHOC is associated with tumor cell proliferation and metastasis. This gene encodes a member of the Rho family of small GTPases, which cycle between inactive GDP-bound and active GTP-bound states and function as molecular switches in signal transduction cascades. Rho proteins promote reorganization of the actin cytoskeleton and regulate cell shape, attachment, and motility. The protein encoded by this gene is prenylated at its C-terminus, and localizes to the cytoplasm and plasma membrane. It is thought to be important in cell locomotion. Overexpression of this gene is associated with tumor cell proliferation and metastasis. Multiple alternatively spliced variants, encoding the same protein, have been identified.

**Synonyms:**

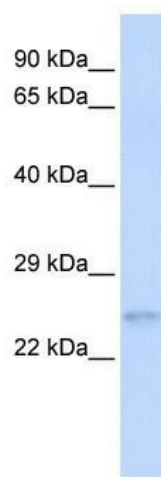
ARH9; ARHC; H9; RHOH9

**Note:**

Immunogen sequence homology: Dog: 100%; Pig: 100%; Rat: 100%; Goat: 100%; Horse: 100%; Human: 100%; Mouse: 100%; Sheep: 100%; Yeast: 100%; Bovine: 100%; Rabbit: 100%; Zebrafish: 100%; Guinea pig: 100%

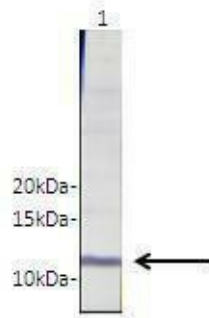
**Protein Families:**

Druggable Genome

**Product images:**

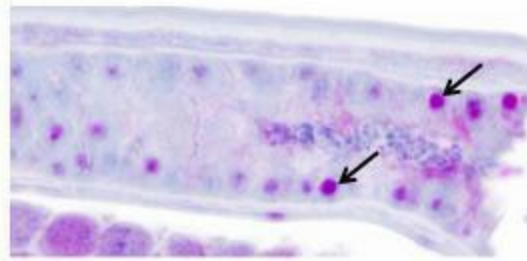
WB Suggested Anti-RHOC Antibody Titration: 0.2-1 ug/ml; ELISA Titer: 1:62500; Positive Control: Human Liver

RHOC



Lanes: Lane 1: 20ug of Brugia malayi total worm extract; Primary Antibody Dilution: 1:1000; Secondary Antibody: Anti-rabbit-HRP; Secondary Antibody Dilution: ; 1:5000; Gene Name: ; RHOC; Submitted by: ; Peter U. Fischer, Washington University School of Me

RHOC



Sample Type : Brugia malayi intestinal cross section  
 Primary Antibody Dilution : 1:200  
 Secondary Antibody : Anti-rabbit-AP  
 Secondary Antibody Dilution ;; 1:5000  
 Gene Name ;; RHOC  
 Submitted by ;; Peter U. Fischer, Ph.D., Research Associate Professor, Washington