

Product datasheet for **TA333446**

PRR15 Rabbit Polyclonal Antibody

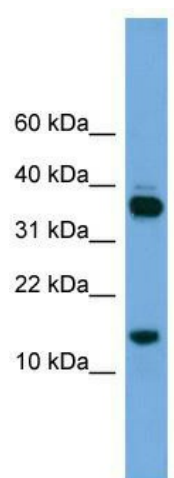
Product data:

| | |
|-------------------------|--|
| Product Type: | Primary Antibodies |
| Applications: | WB |
| Recommended Dilution: | WB |
| Reactivity: | Human |
| Host: | Rabbit |
| Isotype: | IgG |
| Clonality: | Polyclonal |
| Immunogen: | The immunogen for Anti-PRR15 Antibody: synthetic peptide directed towards the middle region of human PRR15. Synthetic peptide located within the following region: GDKSGSSRRNLKISRSGRFKEKRKVRATLLPEAGRSPEEAGFPGDPHEDK |
| Formulation: | Liquid. Purified antibody supplied in 1x PBS buffer with 0.09% (w/v) sodium azide and 2% sucrose. |
| Purification: | Affinity Purified |
| Conjugation: | Unconjugated |
| Storage: | Store at -20°C as received. |
| Stability: | Stable for 12 months from date of receipt. |
| Predicted Protein Size: | 14 kDa |
| Gene Name: | proline rich 15 |
| Database Link: | NP_787083 Entrez Gene 222171 Human Q8IV56 |
| Background: | PRR15 may have a role in proliferation and/or differentiation. |
| Synonyms: | proline rich 15 |
| Note: | Immunogen sequence homology: Human: 100%; Horse: 92%; Pig: 85%; Sheep: 85%; Bovine: 85%; Rat: 77% |



[View online »](#)

Product images:



WB Suggested Anti-PRR15 Antibody Titration: 0.2-1 ug/ml; Positive Control: Jurkat cell lysate