

## Product datasheet for **TA333444**

### ZADH2 Rabbit Polyclonal Antibody

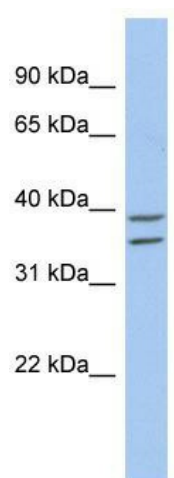
#### Product data:

Product Type:	Primary Antibodies
Applications:	WB
Recommended Dilution:	WB
Reactivity:	Human
Host:	Rabbit
Isotype:	IgG
Clonality:	Polyclonal
Immunogen:	The immunogen for Anti-ZADH2 Antibody: synthetic peptide directed towards the N terminal of human ZADH2. Synthetic peptide located within the following region: MLRLVPTGARAIVDMSYARHFLDFQGS AIPQAMQKLVVTRLSPNFREAVT
Formulation:	Liquid. Purified antibody supplied in 1x PBS buffer with 0.09% (w/v) sodium azide and 2% sucrose. <i>Note that this product is shipped as lyophilized powder to China customers.</i>
Purification:	Affinity Purified
Conjugation:	Unconjugated
Storage:	Store at -20°C as received.
Stability:	Stable for 12 months from date of receipt.
Predicted Protein Size:	40 kDa
Gene Name:	zinc binding alcohol dehydrogenase domain containing 2
Database Link:	<a href="#">NP_787103</a> <a href="#">Entrez Gene 284273 Human</a> <a href="#">Q8N4Q0</a>
Background:	The exact functions of ZADH2 remain unknown.
Synonyms:	MGC45594
Note:	Immunogen sequence homology: Rat: 100%; Human: 100%; Mouse: 100%; Bovine: 100%; Rabbit: 100%; Dog: 93%
Protein Families:	Druggable Genome



[View online »](#)

## Product images:



WB Suggested Anti-ZADH2 Antibody Titration:  
0.2-1 ug/ml; ELISA Titer: 1:1562500; Positive  
Control: 721\_B cell lysate