

## Product datasheet for **TA333443**

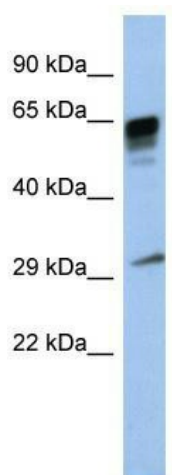
### PRR18 Rabbit Polyclonal Antibody

#### Product data:

Product Type:	Primary Antibodies
Applications:	WB
Recommended Dilution:	WB
Reactivity:	Human
Host:	Rabbit
Isotype:	IgG
Clonality:	Polyclonal
Immunogen:	The immunogen for Anti-PRR18 Antibody: synthetic peptide directed towards the middle region of human PRR18. Synthetic peptide located within the following region: LPARAAGPRRGGPASDPDAPPTAGQGRRAPPPGAQLLHGGLQVPQLSPRP
Formulation:	Liquid. Purified antibody supplied in 1x PBS buffer with 0.09% (w/v) sodium azide and 2% sucrose.
Purification:	Affinity Purified
Conjugation:	Unconjugated
Storage:	Store at -20°C as received.
Stability:	Stable for 12 months from date of receipt.
Predicted Protein Size:	31 kDa
Gene Name:	proline rich 18
Database Link:	<a href="#">NP_787118</a> <a href="#">Entrez Gene 285800 Human</a> <a href="#">Q8N4B5</a>
Background:	The exact functions of PRR18 remain unknown.
Synonyms:	MGC35308
Note:	Immunogen sequence homology: Human: 100%



[View online »](#)

**Product images:**

WB Suggested Anti-PRR18 Antibody Titration: 0.2-1 ug/ml; ELISA Titer: 1:312500; Positive Control: Human Placenta