

Product datasheet for **TA333441**

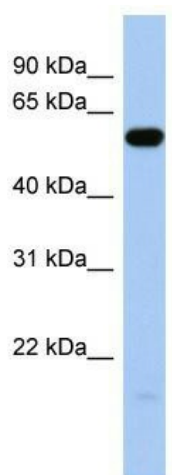
ILDR1 Rabbit Polyclonal Antibody

Product data:

Product Type:	Primary Antibodies
Applications:	WB
Recommended Dilution:	WB
Reactivity:	Human
Host:	Rabbit
Isotype:	IgG
Clonality:	Polyclonal
Immunogen:	The immunogen for Anti-ILDR1 Antibody: synthetic peptide directed towards the middle region of human ILDR1. Synthetic peptide located within the following region: RRGSHSPHWPEEKPPSYRSLDITPGKNSRKKGSVERRSEKDSSHSGRSVV
Formulation:	Liquid. Purified antibody supplied in 1x PBS buffer with 0.09% (w/v) sodium azide and 2% sucrose. <i>Note that this product is shipped as lyophilized powder to China customers.</i>
Purification:	Affinity Purified
Conjugation:	Unconjugated
Storage:	Store at -20°C as received.
Stability:	Stable for 12 months from date of receipt.
Predicted Protein Size:	58 kDa
Gene Name:	immunoglobulin like domain containing receptor 1
Database Link:	NP_787120 Entrez Gene 286676 Human Q86SU0
Background:	ILDR1 is a putative membrane receptor.
Synonyms:	DFNB42; ILDR1alpha; ILDR1alpha'; ILDR1beta
Note:	Immunogen sequence homology: Human: 100%; Pig: 93%; Guinea pig: 93%; Horse: 86%; Mouse: 86%; Rat: 79%
Protein Families:	Druggable Genome, Transmembrane



[View online »](#)

Product images:

WB Suggested Anti-ILDR1 Antibody Titration: 0.2-1 ug/ml; ELISA Titer: 1:312500; Positive Control: Human brain