

Product datasheet for **TA333440**

T2R50 (TAS2R50) Rabbit Polyclonal Antibody

Product data:

Product Type:	Primary Antibodies
Applications:	WB
Recommended Dilution:	WB
Reactivity:	Human
Host:	Rabbit
Isotype:	IgG
Clonality:	Polyclonal
Immunogen:	The immunogen for Anti-TAS2R50 Antibody is: synthetic peptide directed towards the C-terminal region of Human TAS2R50. Synthetic peptide located within the following region: PFTLSLISFLMLICSLCKHLKMKQLHGEGSQDLSTKVHIKALQTLISFLL
Formulation:	Liquid. Purified antibody supplied in 1x PBS buffer with 0.09% (w/v) sodium azide and 2% sucrose. <i>Note that this product is shipped as lyophilized powder to China customers.</i>
Purification:	Affinity Purified
Conjugation:	Unconjugated
Storage:	Store at -20°C as received.
Stability:	Stable for 12 months from date of receipt.
Predicted Protein Size:	33 kDa
Gene Name:	taste 2 receptor member 50
Database Link:	NP_795371 Entrez Gene 259296 Human P59544
Background:	TAS2R50 belongs to the large TAS2R receptor family. TAS2Rs are expressed on the surface of taste receptor cells and mediate the perception of bitterness through a G protein-coupled second messenger pathway.
Synonyms:	T2R50; T2R51; TAS2R51
Note:	Immunogen sequence homology: Human: 100%

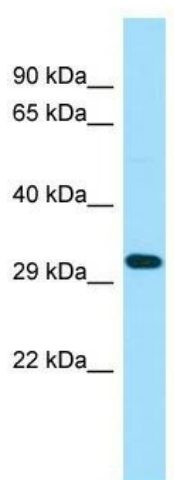


[View online »](#)

Protein Families: Transmembrane

Protein Pathways: Taste transduction

Product images:



WB Suggested Anti-TAS2R50 Antibody; Titration:
1.0 ug/ml; Positive Control: Fetal Lung