

Product datasheet for **TA333438**

GOLM2 Rabbit Polyclonal Antibody

Product data:

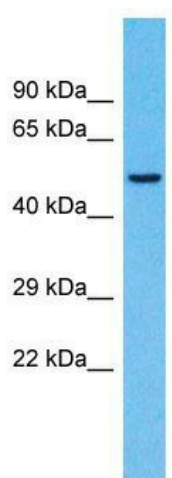
Product Type:	Primary Antibodies
Applications:	WB
Recommended Dilution:	WB
Reactivity:	Human
Host:	Rabbit
Isotype:	IgG
Clonality:	Polyclonal
Immunogen:	The immunogen for Anti-CASC4 Antibody is: synthetic peptide directed towards the N-terminal region of Human CASC4. Synthetic peptide located within the following region: DLLLLVDTHKKQIDQKEADYGRLLSRLQAREGLGKRCEDDKVKLQNNISY
Formulation:	Liquid. Purified antibody supplied in 1x PBS buffer with 0.09% (w/v) sodium azide and 2% sucrose.
Purification:	Affinity Purified
Conjugation:	Unconjugated
Storage:	Store at -20°C as received.
Stability:	Stable for 12 months from date of receipt.
Predicted Protein Size:	47 kDa
Gene Name:	cancer susceptibility candidate 4
Database Link:	NP_816929 Entrez Gene 113201 Human Q6P4E1
Background:	The increased expression level of this gene is associated with HER-2/neu proto-oncogene overexpression. Amplification and resulting overexpression of this proto-oncogene are found in approximately 30% of human breast and 20% of human ovarian cancers. Alternatively spliced variants encoding different isoforms have been identified for this gene.
Synonyms:	H63
Note:	Immunogen sequence homology: Dog: 100%; Pig: 100%; Rat: 100%; Human: 100%; Mouse: 100%; Bovine: 100%; Rabbit: 100%



[View online »](#)

Protein Families: Transmembrane

Product images:



Host: Rabbit; Target Name: CASC4; Sample
Tissue: Fetal Liver lysates; Antibody Dilution: 1.0
ug/ml.