

Product datasheet for **TA333437**

R3hdm4 Rabbit Polyclonal Antibody

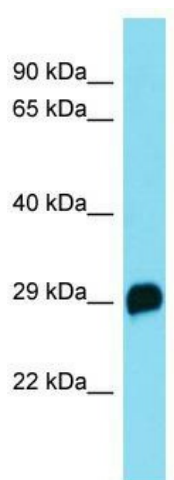
Product data:

Product Type:	Primary Antibodies
Applications:	WB
Recommended Dilution:	WB
Reactivity:	Mouse
Host:	Rabbit
Isotype:	IgG
Clonality:	Polyclonal
Immunogen:	The immunogen for Anti-R3hdm4 Antibody is: synthetic peptide directed towards the N-terminal region of Mouse R3hdm4. Synthetic peptide located within the following region: MVALDNSEGGPEATPSGETRLSLPGCLPPLSGSQVKRVASRRKQHFINQ
Formulation:	Liquid. Purified antibody supplied in 1x PBS buffer with 0.09% (w/v) sodium azide and 2% sucrose. <i>Note that this product is shipped as lyophilized powder to China customers.</i>
Purification:	Affinity Purified
Conjugation:	Unconjugated
Storage:	Store at -20°C as received.
Stability:	Stable for 12 months from date of receipt.
Predicted Protein Size:	29 kDa
Gene Name:	R3H domain containing 4
Database Link:	NP_818775 Entrez Gene 109284 Mouse Q4VBF2
Background:	The function of this protein remains unknown.
Synonyms:	AI503502; C030046I01Rik
Note:	Immunogen sequence homology: Human: 100%; Bovine: 100%; Pig: 93%; Dog: 92%; Mouse: 92%; Guinea pig: 92%; Rat: 85%



[View online »](#)

Product images:



Host: Rabbit; Target Name: R3hdm4; Sample
Tissue: Mouse Kidney lysates; Antibody Dilution:
1.0 ug/ml.