

Product datasheet for **TA333436**

SOX5 Rabbit Polyclonal Antibody

Product data:

Product Type:	Primary Antibodies
Applications:	WB
Recommended Dilution:	WB
Reactivity:	Human, Mouse
Host:	Rabbit
Isotype:	IgG
Clonality:	Polyclonal
Immunogen:	The immunogen for Anti-SOX5 Antibody: synthetic peptide directed towards the C terminal of human SOX5. Synthetic peptide located within the following region: PEPGMPVIQSTYGVKGEEPHIKEEIIQAEDINGEYDEYDEEEDDPDVDYG
Formulation:	Liquid. Purified antibody supplied in 1x PBS buffer with 0.09% (w/v) sodium azide and 2% sucrose.
Purification:	Affinity Purified
Conjugation:	Unconjugated
Storage:	Store at -20°C as received.
Stability:	Stable for 12 months from date of receipt.
Predicted Protein Size:	42 kDa
Gene Name:	SRY-box 5
Database Link:	NP_821078 Entrez Gene 20678 Mouse Entrez Gene 6660 Human P35711
Background:	SOX5 encodes a member of the SOX (SRY-related HMG-box) family of transcription factors involved in the regulation of embryonic development and in the determination of the cell fate. The encoded protein may act as a transcriptional regulator after forming a protein complex with other proteins. The encoded protein may play a role in chondrogenesis. A pseudogene of this gene is located on chromosome 8.
Synonyms:	L-SOX5; L-SOX5B; L-SOX5F; LAMSHF

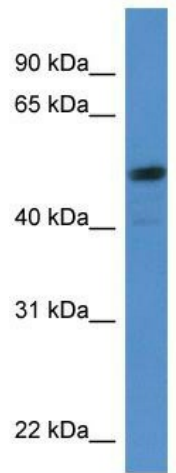


[View online »](#)

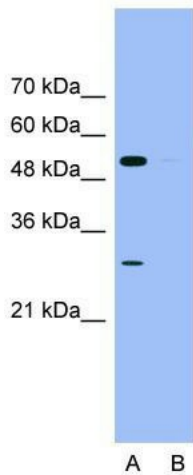
Note: Immunogen sequence homology: Dog: 100%; Pig: 100%; Rat: 100%; Horse: 100%; Human: 100%; Bovine: 100%; Rabbit: 100%; Guinea pig: 100%; Mouse: 92%

Protein Families: Transcription Factors

Product images:



WB Suggested Anti-SOX5 Antibody Titration: 0.2-1 ug/ml; ELISA Titer: 1:62500; Positive Control: Hela cell lysate



Primary Antibody: SOX5
Lysate: HepG2 Cell

Lane A: Primary Antibody
Lane B: Primary Antibody + Blocking Peptide

Primary Antibody Concentration: 2.0µg/ml
Peptide Concentration: 2.0µg/ml
Lysate Quantity: 25µg/lane
Gel Concentration: 12%

Host: Rabbit; Target Name: SOX5; Sample Tissue: HepG2 cell lysates; Lane A: Primary Antibody; Lane B: Primary Antibody + Blocking Peptide ; Primary Antibody Concentration:2.0 ug/ml; Peptide Concentration: 0.0ug/ml; Lysate Quantity: 25ug/lane; Gel Concentr