

Product datasheet for TA333435

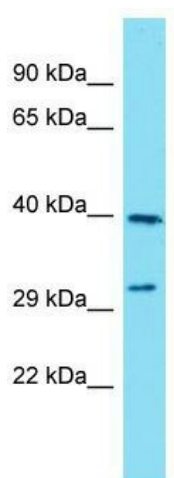
C1orf201 (STPG1) Rabbit Polyclonal Antibody

Product data:

Product Type:	Primary Antibodies
Applications:	WB
Recommended Dilution:	WB
Reactivity:	Human
Host:	Rabbit
Isotype:	IgG
Clonality:	Polyclonal
Immunogen:	The immunogen for Anti-STPG1 Antibody is: synthetic peptide directed towards the C-terminal region of Human STPG1. Synthetic peptide located within the following region: SCFKSKTNRGLKLTSTGPGPGYYNPSDCTKVPKKTLPKPNILNFSQAQPS
Formulation:	Liquid. Purified antibody supplied in 1x PBS buffer with 0.09% (w/v) sodium azide and 2% sucrose.
Purification:	Affinity Purified
Conjugation:	Unconjugated
Storage:	Store at -20°C as received.
Stability:	Stable for 12 months from date of receipt.
Predicted Protein Size:	31 kDa
Gene Name:	sperm tail PG-rich repeat containing 1
Database Link:	NP_835223 Entrez Gene 90529 Human Q5TH74
Background:	The function of this protein remains unknown.
Synonyms:	C1orf201; MAPO2
Note:	Immunogen sequence homology: Human: 100%; Horse: 93%; Bovine: 93%; Rat: 91%; Pig: 86%; Rabbit: 86%; Guinea pig: 86%



[View online »](#)

Product images:

Host: Rabbit; Target Name: STPG1; Sample
Tissue: ACHN Whole cell lysates; Antibody
Dilution: 1.0 ug/ml.