

Product datasheet for **TA333434**

ANGPTL5 Rabbit Polyclonal Antibody

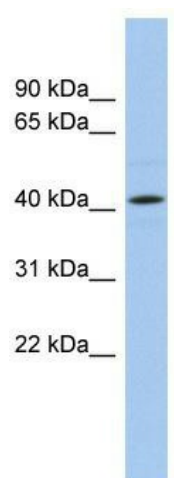
Product data:

Product Type:	Primary Antibodies
Applications:	WB
Recommended Dilution:	WB
Reactivity:	Human
Host:	Rabbit
Isotype:	IgG
Clonality:	Polyclonal
Immunogen:	The immunogen for Anti-ANGPTL5 Antibody: synthetic peptide directed towards the N terminal of human ANGPTL5. Synthetic peptide located within the following region: ASLDYLSNQVNELMNRVLLLTTTEVFRKQLDPFPHRPVQSHGLDCTDIKDT
Formulation:	Liquid. Purified antibody supplied in 1x PBS buffer with 0.09% (w/v) sodium azide and 2% sucrose. <i>Note that this product is shipped as lyophilized powder to China customers.</i>
Purification:	Affinity Purified
Conjugation:	Unconjugated
Storage:	Store at -20°C as received.
Stability:	Stable for 12 months from date of receipt.
Predicted Protein Size:	44 kDa
Gene Name:	angiopoietin like 5
Database Link:	NP_835228 Entrez Gene 253935 Human Q86XS5
Background:	The exact functions of ANGPTL5 remain unknown.
Synonyms:	angiopoietin-like 5; fibrinogen-like
Note:	Immunogen sequence homology: Horse: 100%; Human: 100%; Pig: 93%; Bovine: 93%; Dog: 86%; Guinea pig: 86%
Protein Families:	Druggable Genome, ES Cell Differentiation/IPS, Secreted Protein



[View online »](#)

Product images:



WB Suggested Anti-ANGPTL5 Antibody Titration:
0.2-1 ug/ml; ELISA Titer: 1:312500; Positive
Control: Hela cell lysate