

## Product datasheet for TA333432

### GMCL1 Rabbit Polyclonal Antibody

#### Product data:

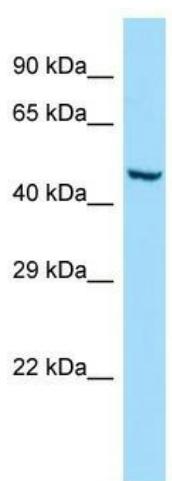
Product Type:	Primary Antibodies
Applications:	WB
Recommended Dilution:	WB
Reactivity:	Human
Host:	Rabbit
Isotype:	IgG
Clonality:	Polyclonal
Immunogen:	The immunogen for Anti-GMCL1 Antibody is: synthetic peptide directed towards the C-terminal region of Human GMCL1. Synthetic peptide located within the following region: QWFAMLRAEQDSEVGPQEINKEELEGNSMRCGRKLAKDGEYCWRWTGFNF
Formulation:	Liquid. Purified antibody supplied in 1x PBS buffer with 0.09% (w/v) sodium azide and 2% sucrose. <i>Note that this product is shipped as lyophilized powder to China customers.</i>
Purification:	Affinity Purified
Conjugation:	Unconjugated
Storage:	Store at -20°C as received.
Stability:	Stable for 12 months from date of receipt.
Predicted Protein Size:	57 kDa
Gene Name:	germ cell-less, spermatogenesis associated 1
Database Link:	<a href="#">NP_848526</a> <a href="#">Entrez Gene 64395 Human</a> <a href="#">Q96IK5</a>
Background:	This gene encodes a nuclear envelope protein that appears to be involved in spermatogenesis, either directly or by influencing genes that play a more direct role in the process. This multi-exon locus is the homolog of the mouse and drosophila germ cell-less gene but the human genome also contains a single-exon locus on chromosome 5 that contains an open reading frame capable of encoding a highly-related protein.
Synonyms:	BTBD13; GCL; GCL1; SPATA29



[View online »](#)

**Note:** Immunogen sequence homology: Dog: 100%; Pig: 100%; Rat: 100%; Horse: 100%; Human: 100%; Mouse: 100%; Bovine: 100%; Rabbit: 100%; Guinea pig: 86%

### Product images:



WB Suggested Anti-GMCL1 Antibody; Titration: 1.0 ug/ml; Positive Control: 293T Whole Cell  
GMCL1 is supported by BioGPS gene expression data to be expressed in HEK293T