

Product datasheet for **TA333431**

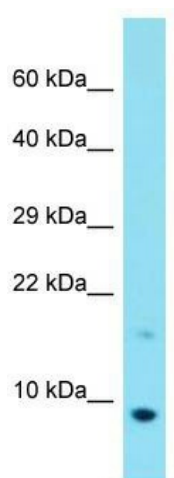
C20orf166 (MIR1-1HG) Rabbit Polyclonal Antibody

Product data:

Product Type:	Primary Antibodies
Applications:	WB
Recommended Dilution:	WB
Reactivity:	Human
Host:	Rabbit
Isotype:	IgG
Clonality:	Polyclonal
Immunogen:	The immunogen for Anti-C20orf166 Antibody is: synthetic peptide directed towards the C-terminal region of Human C20orf166. Synthetic peptide located within the following region: AEAFSQPQPHSAPVCEGQQLTGKFSTSVLTRAGGDASPCSWERLLCYGWS
Formulation:	Liquid. Purified antibody supplied in 1x PBS buffer with 0.09% (w/v) sodium azide and 2% sucrose.
Purification:	Affinity Purified
Conjugation:	Unconjugated
Storage:	Store at -20°C as received.
Stability:	Stable for 12 months from date of receipt.
Predicted Protein Size:	12 kDa
Gene Name:	MIR1-1 host gene
Database Link:	NP_848558 Entrez Gene 128826 Human Q9H1L0
Background:	The function of this protein remains unknown.
Synonyms:	C20orf166; dj353C17.1; MIR133A2HG
Note:	Immunogen sequence homology: Human: 100%



[View online »](#)

Product images:

Host: Rabbit; Target Name: C20orf166; Sample
Tissue: MCF7 Whole Cell lysates; Antibody
Dilution: 1.0 ug/ml.