

Product datasheet for **TA333429**

ACTL9 Rabbit Polyclonal Antibody

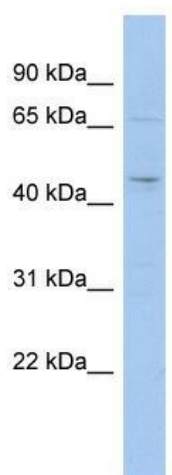
Product data:

Product Type:	Primary Antibodies
Applications:	WB
Recommended Dilution:	WB
Reactivity:	Human
Host:	Rabbit
Isotype:	IgG
Clonality:	Polyclonal
Immunogen:	The immunogen for Anti-MGC33407 Antibody: synthetic peptide directed towards the middle region of human MGC33407. Synthetic peptide located within the following region: DHPLLFSDPPFSPATNREKLVEVAFESLRSPAMYVASQSVLSVYAHGRVS
Formulation:	Liquid. Purified antibody supplied in 1x PBS buffer with 0.09% (w/v) sodium azide and 2% sucrose. <i>Note that this product is shipped as lyophilized powder to China customers.</i>
Purification:	Affinity Purified
Conjugation:	Unconjugated
Storage:	Store at -20°C as received.
Stability:	Stable for 12 months from date of receipt.
Predicted Protein Size:	45 kDa
Gene Name:	actin like 9
Database Link:	NP_848620 Entrez Gene 284382 Human Q8TC94
Background:	The specific function of this protein remains unknown.
Synonyms:	HSD21
Note:	Immunogen sequence homology: Pig: 100%; Rat: 100%; Human: 100%; Mouse: 100%; Rabbit: 100%; Guinea pig: 100%; Dog: 93%; Horse: 93%; Bovine: 93%



[View online »](#)

Product images:



WB Suggested Anti-MGC33407 Antibody Titration:
0.2-1 ug/ml; ELISA Titer: 1:1562500; Positive
Control: THP-1 cell lysate