

## Product datasheet for **TA333427**

### **C1orf110 (CCDC190) Rabbit Polyclonal Antibody**

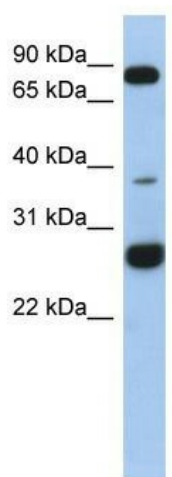
#### **Product data:**

Product Type:	Primary Antibodies
Applications:	WB
Recommended Dilution:	WB
Reactivity:	Human
Host:	Rabbit
Isotype:	IgG
Clonality:	Polyclonal
Immunogen:	The immunogen for Anti-C1orf110 Antibody: synthetic peptide directed towards the N terminal of human C1orf110. Synthetic peptide located within the following region: LKVICLYHVKLLTWEQRQLQKELQRLQQAETMKKKFSSYLGNGFQKRPED
Formulation:	Liquid. Purified antibody supplied in 1x PBS buffer with 0.09% (w/v) sodium azide and 2% sucrose.
Purification:	Affinity Purified
Conjugation:	Unconjugated
Storage:	Store at -20°C as received.
Stability:	Stable for 12 months from date of receipt.
Predicted Protein Size:	34 kDa
Gene Name:	coiled-coil domain containing 190
Database Link:	<a href="#">NP_848645</a> <a href="#">Entrez Gene 339512 Human</a> <a href="#">Q86UF4</a>
Background:	The exact functions of C1orf110 remain unknown.
Synonyms:	C1orf110
Note:	Immunogen sequence homology: Dog: 100%; Pig: 100%; Horse: 100%; Human: 100%; Mouse: 100%; Bovine: 100%; Rabbit: 100%; Rat: 93%; Guinea pig: 93%



[View online »](#)

## Product images:



WB Suggested Anti-C1orf110 Antibody Titration:  
0.2-1 ug/ml; ELISA Titer: 1:1562500; Positive  
Control: Human heart