

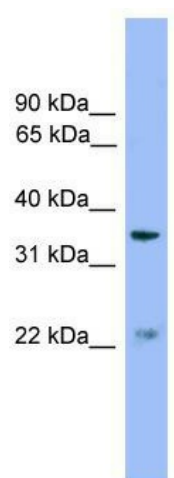
Product datasheet for **TA333424**

ZDHHC21 Rabbit Polyclonal Antibody

Product data:

Product Type:	Primary Antibodies
Applications:	WB
Recommended Dilution:	WB
Reactivity:	Human
Host:	Rabbit
Isotype:	IgG
Clonality:	Polyclonal
Immunogen:	The immunogen for Anti-ZDHHC21 Antibody: synthetic peptide directed towards the middle region of human ZDHHC21. Synthetic peptide located within the following region: ELLTCYALMFSFCHYYYFLPLKKRNLDLFVFRHELAIMRLAAAFMGITMLV
Formulation:	Liquid. Purified antibody supplied in 1x PBS buffer with 0.09% (w/v) sodium azide and 2% sucrose.
Purification:	Affinity Purified
Conjugation:	Unconjugated
Storage:	Store at -20°C as received.
Stability:	Stable for 12 months from date of receipt.
Predicted Protein Size:	31 kDa
Gene Name:	zinc finger DHHC-type containing 21
Database Link:	NP_848661 Entrez Gene 340481 Human Q8IVQ6
Background:	The function of this protein remains unknown.
Synonyms:	9130404H11Rik; DHHC-21; DHHC21; DNZ1; HSPC097
Note:	Immunogen sequence homology: Human: 100%; Dog: 93%; Pig: 93%; Rat: 93%; Horse: 93%; Mouse: 93%; Bovine: 93%; Rabbit: 93%; Guinea pig: 93%
Protein Families:	Transmembrane


[View online »](#)

Product images:


WB Suggested Anti-ZDHHC21 Antibody Titration:
0.2-1 ug/ml; Positive Control: THP-1 cell lysate