

## Product datasheet for **TA333423**

### TBC1D26 Rabbit Polyclonal Antibody

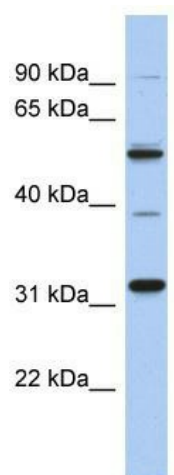
#### Product data:

|                         |   |
|-------------------------|---|
| Product Type:           | Primary Antibodies  |
| Applications:           | WB  |
| Recommended Dilution:   | WB  |
| Reactivity:             | Human   |
| Host:                   | Rabbit  |
| Isotype:                | IgG   |
| Clonality:              | Polyclonal  |
| Immunogen:              | The immunogen for Anti-MGC51025 Antibody: synthetic peptide directed towards the middle region of human MGC51025. Synthetic peptide located within the following region:<br>RGRAWSLLLDIDRIKSQNPQKYMKEKGRSSRIIHCIQLDVSHTLQKH |
| Formulation:            | Liquid. Purified antibody supplied in 1x PBS buffer with 0.09% (w/v) sodium azide and 2% sucrose.<br><i>Note that this product is shipped as lyophilized powder to China customers.</i>                                     |
| Purification:           | Affinity Purified   |
| Conjugation:            | Unconjugated  |
| Storage:                | Store at -20°C as received.   |
| Stability:              | Stable for 12 months from date of receipt.  |
| Predicted Protein Size: | 29 kDa  |
| Gene Name:              | TBC1 domain family member 26  |
| Database Link:          | <a href="#">NP_848666</a><br><a href="#">Entrez Gene 353149 Human</a><br><a href="#">Q86UD7</a>   |
| Background:             | MGC51025 may act as a GTPase-activating protein for Rab family protein(s).  |
| Synonyms:               | FLJ55788; MGC51025  |
| Note:                   | Immunogen sequence homology: Human: 100%  |



[View online »](#)

## Product images:



WB Suggested Anti-MGC51025 Antibody Titration:  
0.2-1 ug/ml; ELISA Titer: 1:1562500; Positive  
Control: Human kidney