

Product datasheet for **TA333422**

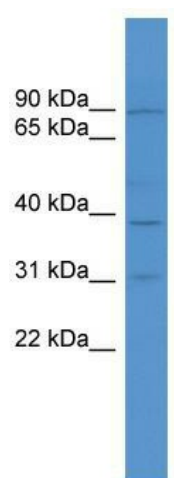
TBC1D26 Rabbit Polyclonal Antibody

Product data:

Product Type:	Primary Antibodies
Applications:	WB
Recommended Dilution:	WB
Reactivity:	Human
Host:	Rabbit
Isotype:	IgG
Clonality:	Polyclonal
Immunogen:	The immunogen for Anti-MGC51025 Antibody: synthetic peptide directed towards the C terminal of human MGC51025. Synthetic peptide located within the following region: LLCLPEEDAFWALTQLLAGERHSLWYSTAQILPGRSGSYRTRSRCCTSPS
Formulation:	Liquid. Purified antibody supplied in 1x PBS buffer with 0.09% (w/v) sodium azide and 2% sucrose. <i>Note that this product is shipped as lyophilized powder to China customers.</i>
Purification:	Affinity Purified
Conjugation:	Unconjugated
Storage:	Store at -20°C as received.
Stability:	Stable for 12 months from date of receipt.
Predicted Protein Size:	29 kDa
Gene Name:	TBC1 domain family member 26
Database Link:	NP_848666 Entrez Gene 353149 Human Q86UD7
Background:	MGC51025 may act as a GTPase-activating protein for Rab family protein(s).
Synonyms:	FLJ55788; MGC51025
Note:	Immunogen sequence homology: Human: 100%



[View online »](#)

Product images:

WB Suggested Anti-MGC51025 Antibody Titration:
0.2-1 ug/ml; ELISA Titer: 1:1562500; Positive
Control: OVCAR-3 cell lysate