

Product datasheet for TA333421

Tigd5 Rabbit Polyclonal Antibody

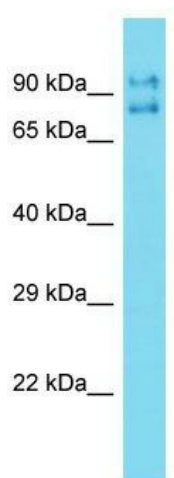
Product data:

Product Type:	Primary Antibodies
Applications:	WB
Recommended Dilution:	WB
Reactivity:	Mouse
Host:	Rabbit
Isotype:	IgG
Clonality:	Polyclonal
Immunogen:	The immunogen for Anti-Tigd5 Antibody is: synthetic peptide directed towards the N-terminal region of Mouse Tigd5. Synthetic peptide located within the following region: PGSTARPPPPPAPGPRPRVAVKMTFRKAYSIKDKLQAIERVKGGGERQASV
Formulation:	Liquid. Purified antibody supplied in 1x PBS buffer with 0.09% (w/v) sodium azide and 2% sucrose. <i>Note that this product is shipped as lyophilized powder to China customers.</i>
Purification:	Affinity Purified
Conjugation:	Unconjugated
Storage:	Store at -20°C as received.
Stability:	Stable for 12 months from date of receipt.
Predicted Protein Size:	70 kDa
Gene Name:	tigger transposable element derived 5
Database Link:	NP_848761 Entrez Gene 105734 Mouse Q499M4
Background:	The function of this protein remains unknown.
Synonyms:	FLJ14926; MGC44883
Note:	Immunogen sequence homology: Dog: 100%; Rat: 100%; Human: 100%; Mouse: 100%; Bovine: 100%



[View online »](#)

Product images:



Host: Rabbit; Target Name: Tigd5; Sample Tissue: Mouse Liver lysates; Antibody Dilution: 1.0 ug/ml.