

## Product datasheet for **TA333420**

### Fam168a Rabbit Polyclonal Antibody

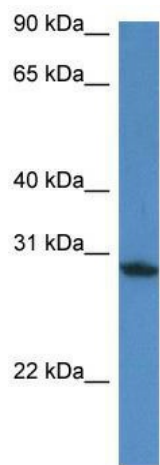
#### Product data:

Product Type:	Primary Antibodies
Applications:	WB
Recommended Dilution:	WB
Reactivity:	Mouse
Host:	Rabbit
Isotype:	IgG
Clonality:	Polyclonal
Immunogen:	The immunogen for Anti-Fam168a Antibody: synthetic peptide corresponding to a region of Mouse. Synthetic peptide located within the following region: NSPSYAPATLLMKQAWPQNSSSCGTEGTFHLPVDTGTENRTYQASSAAFR
Formulation:	Liquid. Purified antibody supplied in 1x PBS buffer with 0.09% (w/v) sodium azide and 2% sucrose. <i>Note that this product is shipped as lyophilized powder to China customers.</i>
Purification:	Affinity Purified
Conjugation:	Unconjugated
Storage:	Store at -20°C as received.
Stability:	Stable for 12 months from date of receipt.
Predicted Protein Size:	26 kDa
Gene Name:	family with sequence similarity 168, member A
Database Link:	<a href="#">NP_848879</a> <a href="#">Entrez Gene 319604 Mouse</a> <a href="#">Q8BGZ2</a>
Background:	The function of this protein remains unknown.
Synonyms:	KIAA0280; TCRP1
Note:	Immunogen sequence homology: Dog: 100%; Pig: 100%; Rat: 100%; Horse: 100%; Human: 100%; Mouse: 100%; Bovine: 100%; Rabbit: 100%; Guinea pig: 100%



[View online »](#)

## Product images:



WB Suggested Anti-Fam168a Antibody; Titration:  
1.0 ug/ml; Positive Control: Mouse Heart