

## Product datasheet for **TA333416**

### SERINC2 Rabbit Polyclonal Antibody

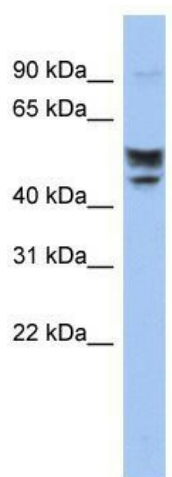
#### Product data:

Product Type:	Primary Antibodies
Applications:	WB
Recommended Dilution:	WB
Reactivity:	Human
Host:	Rabbit
Isotype:	IgG
Clonality:	Polyclonal
Immunogen:	The immunogen for Anti-SERINC2 Antibody: synthetic peptide directed towards the N terminal of human SERINC2. Synthetic peptide located within the following region: VCEEGAGIPTVLQGHIDCGSLLGYRAVYRMCFATAAFFFFFFLLMLCVSS
Formulation:	Liquid. Purified antibody supplied in 1x PBS buffer with 0.09% (w/v) sodium azide and 2% sucrose. <i>Note that this product is shipped as lyophilized powder to China customers.</i>
Purification:	Affinity Purified
Conjugation:	Unconjugated
Storage:	Store at -20°C as received.
Stability:	Stable for 12 months from date of receipt.
Predicted Protein Size:	51 kDa
Gene Name:	serine incorporator 2
Database Link:	<a href="#">NP_849196</a> <a href="#">Entrez Gene 347735 Human</a> <a href="#">Q96SA4</a>
Background:	The specific function of this protein remains unknown.
Synonyms:	FKSG84; PRO0899; TDE2; TDE2L
Note:	Immunogen sequence homology: Human: 100%
Protein Families:	Transmembrane



[View online »](#)

## Product images:



WB Suggested Anti-SERINC2 Antibody Titration:  
0.2-1 ug/ml; ELISA Titer: 1:312500; Positive  
Control: Jurkat cell lysate