

Product datasheet for **TA333415**

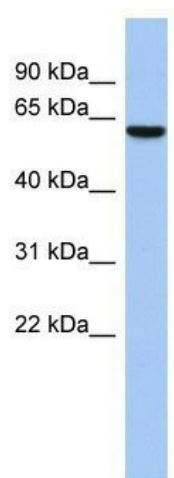
LEMD2 Rabbit Polyclonal Antibody

Product data:

Product Type:	Primary Antibodies
Applications:	WB
Recommended Dilution:	WB
Reactivity:	Human
Host:	Rabbit
Isotype:	IgG
Clonality:	Polyclonal
Immunogen:	The immunogen for Anti-LEMD2 Antibody: synthetic peptide directed towards the middle region of human LEMD2. Synthetic peptide located within the following region: SRRRMKRVWDRAVEFLASNESRIQTESHVRVAGEDMLVWRWTKPSSFSDSE
Formulation:	Liquid. Purified antibody supplied in 1x PBS buffer with 0.09% (w/v) sodium azide and 2% sucrose. <i>Note that this product is shipped as lyophilized powder to China customers.</i>
Purification:	Affinity Purified
Conjugation:	Unconjugated
Storage:	Store at -20°C as received.
Stability:	Stable for 12 months from date of receipt.
Predicted Protein Size:	57 kDa
Gene Name:	LEM domain containing 2
Database Link:	NP_851853 Entrez Gene 221496 Human Q8NC56
Background:	LEMD2 is involved in nuclear structure organization.
Synonyms:	CTRCT42; dj482C21.1; NET25
Note:	Immunogen sequence homology: Dog: 100%; Pig: 100%; Rat: 100%; Horse: 100%; Human: 100%; Mouse: 100%; Bovine: 100%; Guinea pig: 100%
Protein Families:	Transmembrane



[View online »](#)

Product images:

WB Suggested Anti-LEMD2 Antibody Titration:
0.2-1 ug/ml; ELISA Titer: 1:1562500; Positive
Control: Human heart