

Product datasheet for **TA333413**

WDR21A (DCAF4) Rabbit Polyclonal Antibody

Product data:

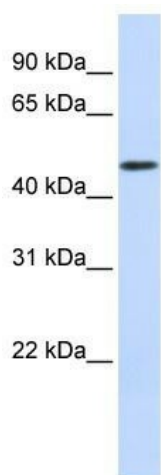
Product Type:	Primary Antibodies
Applications:	WB
Recommended Dilution:	WB, IP, IF
Reactivity:	Human
Host:	Rabbit
Isotype:	IgG
Clonality:	Polyclonal
Immunogen:	The immunogen for Anti-DCAF4 Antibody: synthetic peptide directed towards the middle region of human DCAF4. Synthetic peptide located within the following region: GHRQSFGTNSDVLAAQQFALMAPLLFNGCRSGEIFAIDLRCGNQGKGWKAT
Formulation:	Liquid. Purified antibody supplied in 1x PBS buffer with 0.09% (w/v) sodium azide and 2% sucrose. <i>Note that this product is shipped as lyophilized powder to China customers.</i>
Purification:	Affinity Purified
Conjugation:	Unconjugated
Storage:	Store at -20°C as received.
Stability:	Stable for 12 months from date of receipt.
Predicted Protein Size:	43 kDa
Gene Name:	DDB1 and CUL4 associated factor 4
Database Link:	NP_851937 Entrez Gene 26094 Human Q8WW16
Background:	DCAF4 is a WD repeat-containing protein. The function of DCAF4 remains unknown. This gene encodes a WD repeat-containing protein. Multiple alternatively spliced transcript variants have been found for this gene, but the full-length nature of some variants has not been defined.
Synonyms:	WDR21; WDR21A



[View online »](#)

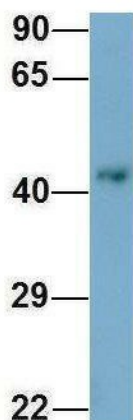
Note: Immunogen sequence homology: Pig: 100%; Human: 100%; Dog: 93%; Horse: 93%; Rabbit: 93%; Rat: 86%; Bovine: 86%; Guinea pig: 86%; Mouse: 79%

Product images:



WB Suggested Anti-WDR21A Antibody Titration:
0.2-1 ug/ml; ELISA Titer: 1: 312500; Positive
Control: Human Muscle

DCAF4



Rabbit Anti-DCAF4
Sample Type: Human Jurkat
Antibody Concentration: 1ug/mL

Host: Rabbit; Target Name: DCAF4; Sample
Tissue: Jurkat; Antibody Dilution: 1.0 ug/ml;
DCAF4 is supported by BioGPS gene expression
data to be expressed in Jurkat