

Product datasheet for TA333412

ERAS Rabbit Polyclonal Antibody

Product data:

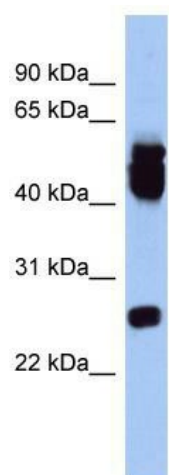
Product Type:	Primary Antibodies
Applications:	WB
Recommended Dilution:	WB
Reactivity:	Human
Host:	Rabbit
Isotype:	IgG
Clonality:	Polyclonal
Immunogen:	The immunogen for Anti-ERAS Antibody: synthetic peptide directed towards the middle region of human ERAS. Synthetic peptide located within the following region: AQPLVLVGNKCDLVTAGDAHAAAAALAHSWGAFHFVETSAKTRQGVVEAF
Formulation:	Liquid. Purified antibody supplied in 1x PBS buffer with 0.09% (w/v) sodium azide and 2% sucrose. <i>Note that this product is shipped as lyophilized powder to China customers.</i>
Purification:	Affinity Purified
Conjugation:	Unconjugated
Storage:	Store at -20°C as received.
Stability:	Stable for 12 months from date of receipt.
Predicted Protein Size:	25 kDa
Gene Name:	ES cell expressed Ras
Database Link:	NP_853510 Entrez Gene 3266 Human Q7Z444
Background:	Ras proteins bind GDP/GTP and possess intrinsic GTPase activity. ERAS plays an important role in the tumor-like growth properties of embryonic stem cells.
Synonyms:	HRAS2; HRASP
Note:	Immunogen sequence homology: Human: 100%; Mouse: 100%; Dog: 93%; Pig: 93%; Rat: 86%; Bovine: 86%; Horse: 85%; Guinea pig: 79%



[View online »](#)

Protein Families: Druggable Genome

Product images:



WB Suggested Anti-ERAS Antibody Titration: 0.2-1 ug/ml; ELISA Titer: 1:312500; Positive Control: Human Lung