

Product datasheet for **TA333411**

Eras Rabbit Polyclonal Antibody

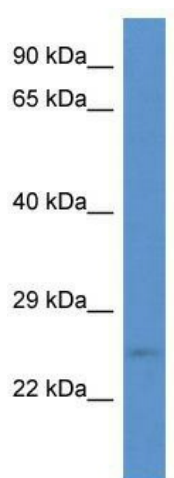
Product data:

Product Type:	Primary Antibodies
Applications:	WB
Recommended Dilution:	WB
Reactivity:	Mouse
Host:	Rabbit
Isotype:	IgG
Clonality:	Polyclonal
Immunogen:	The immunogen for Anti-Eras Antibody: synthetic peptide corresponding to a region of Mouse. Synthetic peptide located within the following region: LPTKSSILDSSGTPCTRSPEESHEAWAQCKDAGRQLPEYKAVVVGASGV
Formulation:	Liquid. Purified antibody supplied in 1x PBS buffer with 0.09% (w/v) sodium azide and 2% sucrose.
Purification:	Affinity Purified
Conjugation:	Unconjugated
Storage:	Store at -20°C as received.
Stability:	Stable for 12 months from date of receipt.
Predicted Protein Size:	25 kDa
Gene Name:	ES cell-expressed Ras
Database Link:	NP_853526 Entrez Gene 353283 Mouse Q7TN89
Background:	Ras proteins bind GDP/GTP and possess intrinsic GTPase activity. Eras plays an important role in the tumor-like growth properties of embryonic stem cells.
Synonyms:	E-Ras; HRAS2; HRASP; MGC126691; MGC126693
Note:	Immunogen sequence homology: Dog: 100%; Pig: 100%; Rat: 100%; Horse: 100%; Human: 100%; Mouse: 100%; Bovine: 100%; Guinea pig: 92%



[View online »](#)

Product images:



WB Suggested Anti-Eras Antibody; Titration: 1.0 ug/ml; Positive Control: Mouse Heart