

Product datasheet for **TA333408**

EFHA2 (MICU3) Rabbit Polyclonal Antibody

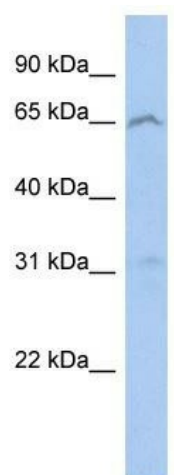
Product data:

Product Type:	Primary Antibodies
Applications:	WB
Recommended Dilution:	WB
Reactivity:	Human
Host:	Rabbit
Isotype:	IgG
Clonality:	Polyclonal
Immunogen:	The immunogen for Anti-EFHA2 Antibody: synthetic peptide directed towards the N terminal of human EFHA2. Synthetic peptide located within the following region: AAAGGGLVGLVCYQLYGDPRAGSPATGRPSKSAATEPEDPPRGRGMLPIP
Formulation:	Liquid. Purified antibody supplied in 1x PBS buffer with 0.09% (w/v) sodium azide and 2% sucrose.
Purification:	Affinity Purified
Conjugation:	Unconjugated
Storage:	Store at -20°C as received.
Stability:	Stable for 12 months from date of receipt.
Predicted Protein Size:	61 kDa
Gene Name:	mitochondrial calcium uptake family member 3
Database Link:	NP_859074 Entrez Gene 286097 Human Q86XE3
Background:	The specific function of this protein remains unknown.
Synonyms:	EFHA2
Note:	Immunogen sequence homology: Rat: 100%; Human: 100%; Mouse: 100%; Rabbit: 92%; Pig: 91%; Bovine: 91%; Dog: 75%



[View online »](#)

Product images:



WB Suggested Anti-EFHA2 Antibody Titration: 0.2-1 ug/ml; ELISA Titer: 1:1562500; Positive Control: 293T cell lysate