

## Product datasheet for **TA333407**

### EFHA2 (MICU3) Rabbit Polyclonal Antibody

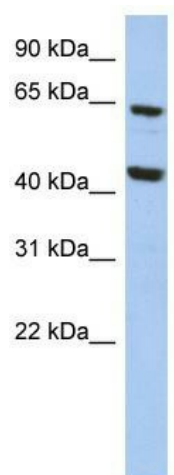
#### Product data:

Product Type:	Primary Antibodies
Applications:	WB
Recommended Dilution:	WB
Reactivity:	Human
Host:	Rabbit
Isotype:	IgG
Clonality:	Polyclonal
Immunogen:	The immunogen for Anti-EFHA2 Antibody: synthetic peptide directed towards the N terminal of human EFHA2. Synthetic peptide located within the following region: TLGLPGRPFSSREDEERAVAEAAWRRRRRWGELSVAAAAGGGLVGLVCYQ
Formulation:	Liquid. Purified antibody supplied in 1x PBS buffer with 0.09% (w/v) sodium azide and 2% sucrose.
Purification:	Affinity Purified
Conjugation:	Unconjugated
Storage:	Store at -20°C as received.
Stability:	Stable for 12 months from date of receipt.
Predicted Protein Size:	61 kDa
Gene Name:	mitochondrial calcium uptake family member 3
Database Link:	<a href="#">NP_859074</a> <a href="#">Entrez Gene 286097 Human</a> <a href="#">Q86XE3</a>
Background:	The specific function of this protein remains unknown.
Synonyms:	EFHA2
Note:	Immunogen sequence homology: Human: 100%; Yeast: 100%; Rabbit: 93%; Pig: 83%; Horse: 83%; Dog: 75%; Bovine: 75%



[View online »](#)

## Product images:



WB Suggested Anti-EFHA2 Antibody Titration: 0.2-1 ug/ml; ELISA Titer: 1:312500; Positive Control: HepG2 cell lysate