

## Product datasheet for **TA333405**

### DPY19L4 Rabbit Polyclonal Antibody

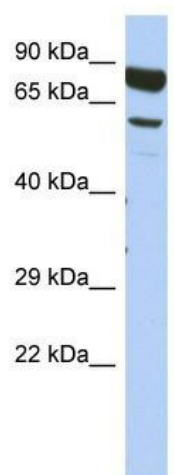
#### Product data:

Product Type:	Primary Antibodies
Applications:	WB
Recommended Dilution:	WB
Reactivity:	Human
Host:	Rabbit
Isotype:	IgG
Clonality:	Polyclonal
Immunogen:	The immunogen for Anti-DPY19L4 Antibody: synthetic peptide directed towards the middle region of human DPY19L4. Synthetic peptide located within the following region: APVAAVFAGSPQLMGAIKLCTGWMVTSLSPLYNDDDLLKRNIYQIYSKR
Formulation:	Liquid. Purified antibody supplied in 1x PBS buffer with 0.09% (w/v) sodium azide and 2% sucrose. <i>Note that this product is shipped as lyophilized powder to China customers.</i>
Purification:	Affinity Purified
Conjugation:	Unconjugated
Storage:	Store at -20°C as received.
Stability:	Stable for 12 months from date of receipt.
Predicted Protein Size:	84 kDa
Gene Name:	dpy-19 like 4 (C. elegans)
Database Link:	<a href="#">NP_861452</a> <a href="#">Entrez Gene 286148 Human</a> <a href="#">Q7Z388</a>
Background:	The specific function of the protein remains unknown.
Synonyms:	MGC131885
Note:	Immunogen sequence homology: Dog: 100%; Pig: 100%; Horse: 100%; Human: 100%; Bovine: 100%; Guinea pig: 100%; Rat: 93%; Rabbit: 93%; Mouse: 86%
Protein Families:	Transmembrane



[View online »](#)

## Product images:



WB Suggested Anti-DPY19L4 Antibody Titration:  
0.2-1 ug/ml; ELISA Titer: 1:1562500; Positive  
Control: Human Thymus