

Product datasheet for **TA333404**

Gliomedin (GLDN) Rabbit Polyclonal Antibody

Product data:

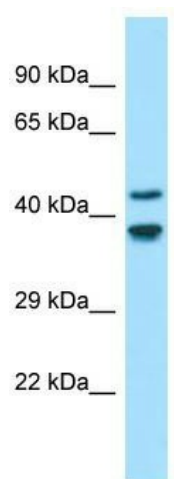
| | |
|-------------------------|--|
| Product Type: | Primary Antibodies |
| Applications: | WB |
| Recommended Dilution: | WB |
| Reactivity: | Human |
| Host: | Rabbit |
| Isotype: | IgG |
| Clonality: | Polyclonal |
| Immunogen: | The immunogen for Anti-GLDN Antibody is: synthetic peptide directed towards the N-terminal region of Human GLDN. Synthetic peptide located within the following region: PPGPPGAGGLPGHNGLDGQGPQGPQKGEKGANGKRGKMGIPGAAGNPGER |
| Formulation: | Liquid. Purified antibody supplied in 1x PBS buffer with 0.09% (w/v) sodium azide and 2% sucrose. |
| Purification: | Affinity Purified |
| Conjugation: | Unconjugated |
| Storage: | Store at -20°C as received. |
| Stability: | Stable for 12 months from date of receipt. |
| Predicted Protein Size: | 46 kDa |
| Gene Name: | gliomedin |
| Database Link: | NP_861454 Entrez Gene 342035 Human Q6ZMI3 |
| Background: | GLDN plays a role in the formation of the nodes of Ranvier along myelinated axons. It is a probable NRCAM and NFASC/neurofascin ligand which may provide a glial positional clue required for the proper molecular assembly of the nodes of Ranvier. |
| Synonyms: | CLOM; COLM; CRG-L2; CRGL2; UNC-112 |
| Note: | Immunogen sequence homology: Pig: 100%; Human: 100%; Bovine: 100%; Rabbit: 100%; Zebrafish: 100%; Guinea pig: 100%; Dog: 93%; Rat: 93%; Horse: 93%; Mouse: 92% |



[View online »](#)

Protein Families: Transmembrane

Product images:



Host: Rabbit; Target Name: GLDN; Sample Tissue: Fetal Brain lysates; Antibody Dilution: 1.0 ug/ml