

Product datasheet for **TA333403**

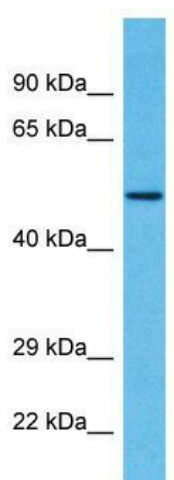
ZNF50 (ZSCAN22) Rabbit Polyclonal Antibody

Product data:

Product Type:	Primary Antibodies
Applications:	WB
Recommended Dilution:	WB
Reactivity:	Human
Host:	Rabbit
Isotype:	IgG
Clonality:	Polyclonal
Immunogen:	The immunogen for Anti-ZSCAN22 Antibody is: synthetic peptide directed towards the N-terminal region of Human ZSCAN22. Synthetic peptide located within the following region: RFRHFRYEEASGPHEALAHLRALCCQWLQPEAHSKEQILELLVLEQLGA
Formulation:	Liquid. Purified antibody supplied in 1x PBS buffer with 0.09% (w/v) sodium azide and 2% sucrose. <i>Note that this product is shipped as lyophilized powder to China customers.</i>
Purification:	Affinity Purified
Conjugation:	Unconjugated
Storage:	Store at -20°C as received.
Stability:	Stable for 12 months from date of receipt.
Predicted Protein Size:	54 kDa
Gene Name:	zinc finger and SCAN domain containing 22
Database Link:	NP_862829 Entrez Gene 342945 Human P10073
Background:	ZSCAN22 may be involved in transcriptional regulation.
Synonyms:	HKR2; ZNF50
Note:	Immunogen sequence homology: Human: 100%; Rat: 93%; Rabbit: 92%; Mouse: 86%; Dog: 85%; Pig: 85%; Horse: 85%; Bovine: 85%; Guinea pig: 85%
Protein Families:	Druggable Genome



[View online »](#)

Product images:

Host: Rabbit; Target Name: ZSCAN22; Sample
Tissue: Breast Tumor lysates; Antibody Dilution:
1.0 ug/ml