

## Product datasheet for **TA333402**

### AMIGO2 Rabbit Polyclonal Antibody

#### Product data:

Product Type:	Primary Antibodies
Applications:	WB
Recommended Dilution:	WB
Reactivity:	Human
Host:	Rabbit
Isotype:	IgG
Clonality:	Polyclonal
Immunogen:	The immunogen for Anti-AMIGO2 Antibody is: synthetic peptide directed towards the N-terminal region of Human AMIGO2. Synthetic peptide located within the following region: LSYNRIGLLDSEWIPVSFAKLNTLILRHNNITSISTGSFSTTPNLKCLDL
Formulation:	Liquid. Purified antibody supplied in 1x PBS buffer with 0.09% (w/v) sodium azide and 2% sucrose. <i>Note that this product is shipped as lyophilized powder to China customers.</i>
Purification:	Affinity Purified
Conjugation:	Unconjugated
Storage:	Store at -20°C as received.
Stability:	Stable for 12 months from date of receipt.
Predicted Protein Size:	57 kDa
Gene Name:	adhesion molecule with Ig-like domain 2
Database Link:	<a href="#">NP_862830</a> <a href="#">Entrez Gene 347902 Human</a> <a href="#">Q86SJ2</a>
Background:	AMIGO2 is required for depolarization-dependent survival of cultured cerebellar granule neurons. It may mediate homophilic as well as heterophilic cell-cell interaction with AMIGO1 or AMIGO3 and may contribute to signal transduction through its intracellular domain. It also may be required for tumorigenesis of a subset of gastric adenocarcinomas.
Synonyms:	ALI1; AMIGO-2; DEGA

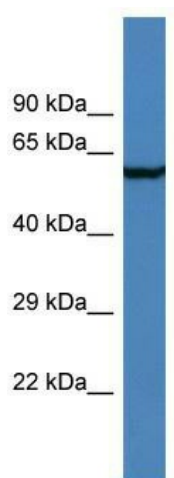


[View online »](#)

**Note:** Immunogen sequence homology: Rat: 100%; Human: 100%; Mouse: 100%; Dog: 93%; Pig: 93%; Horse: 93%; Bovine: 93%

**Protein Families:** Druggable Genome, Transmembrane

**Product images:**



Host: Rabbit; Target Name: AMIGO2; Sample Tissue: RPMI-8226 Whole Cell lysates; Antibody Dilution: 1.0 ug/ml