

## Product datasheet for **TA333401**

### LILRA5 Rabbit Polyclonal Antibody

#### Product data:

Product Type:	Primary Antibodies
Applications:	WB
Recommended Dilution:	WB
Reactivity:	Human
Host:	Rabbit
Isotype:	IgG
Clonality:	Polyclonal
Immunogen:	The immunogen for Anti-LILRA5 Antibody is: synthetic peptide directed towards the N-terminal region of Human LILRA5. Synthetic peptide located within the following region: GNSVTIRCQGTLEAQEYRLVKEGSPEPWDTQNPLEPKNKARFSIPSMTEH
Formulation:	Liquid. Purified antibody supplied in 1x PBS buffer with 0.09% (w/v) sodium azide and 2% sucrose. <i>Note that this product is shipped as lyophilized powder to China customers.</i>
Purification:	Affinity Purified
Conjugation:	Unconjugated
Storage:	Store at -20°C as received.
Stability:	Stable for 12 months from date of receipt.
Predicted Protein Size:	29 kDa
Gene Name:	leukocyte immunoglobulin like receptor A5
Database Link:	<a href="#">NP_870994</a> <a href="#">Entrez Gene 353514 Human</a> <a href="#">A6NI73</a>



[View online »](#)

**Background:**

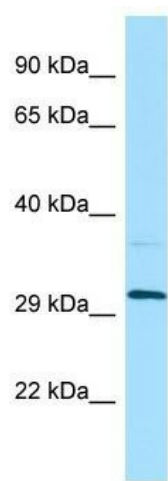
The protein encoded by this gene is a member of the leukocyte immunoglobulin-like receptor (LIR) family. LIR family members are known to have activating and inhibitory functions in leukocytes. Crosslink of this receptor protein on the surface of monocytes has been shown to induce calcium flux and secretion of several proinflammatory cytokines, which suggests the roles of this protein in triggering innate immune responses. This gene is one of the leukocyte receptor genes that form a gene cluster on the chromosomal region 19q13.4. Four alternatively spliced transcript variants encoding distinct isoforms have been described.

**Synonyms:**

CD85; CD85F; ILT-11; ILT11; LILRB7; LIR-9; LIR9

**Note:**

Immunogen sequence homology: Human: 100%; Bovine: 77%; Dog: 75%

**Product images:**

WB Suggested Anti-LILRA5 Antibody; Titration: 1.0 ug/ml; Positive Control: Fetal Lung