

Product datasheet for **TA333400**

USP12 Rabbit Polyclonal Antibody

Product data:

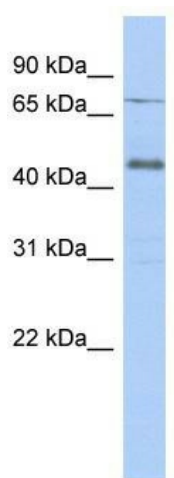
Product Type:	Primary Antibodies
Applications:	WB
Recommended Dilution:	WB
Reactivity:	Human
Host:	Rabbit
Isotype:	IgG
Clonality:	Polyclonal
Immunogen:	The immunogen for Anti-USP12 Antibody: synthetic peptide directed towards the middle region of human USP12. Synthetic peptide located within the following region: ITRLRKENELFDNYMQQDAHEFLNYLLNTIADILQEERKQEKQNGRLPNG
Formulation:	Liquid. Purified antibody supplied in 1x PBS buffer with 0.09% (w/v) sodium azide and 2% sucrose. <i>Note that this product is shipped as lyophilized powder to China customers.</i>
Purification:	Affinity Purified
Conjugation:	Unconjugated
Storage:	Store at -20°C as received.
Stability:	Stable for 12 months from date of receipt.
Predicted Protein Size:	43 kDa
Gene Name:	ubiquitin specific peptidase 12
Database Link:	NP_872294 Entrez Gene 219333 Human O75317
Background:	USP12 is a deubiquitinating enzyme. USP12 has almost no deubiquitinating activity by itself and requires the interaction with WDR48 to have a high activity. USP12 is not involved in deubiquitination of monoubiquitinated FANCD2.
Synonyms:	UBH1; USP12L1
Note:	Immunogen sequence homology: Dog: 100%; Pig: 100%; Rat: 100%; Horse: 100%; Human: 100%; Mouse: 100%; Bovine: 100%; Rabbit: 100%; Zebrafish: 100%; Guinea pig: 100%



[View online »](#)

Protein Families: Druggable Genome, Protease

Product images:



WB Suggested Anti-USP12 Antibody Titration: 0.2-1 ug/ml; ELISA Titer: 1:312500; Positive Control: Human Placenta