

Product datasheet for **TA333399**

MYLK3 Rabbit Polyclonal Antibody

Product data:

Product Type:	Primary Antibodies
Applications:	WB
Recommended Dilution:	WB
Reactivity:	Human
Host:	Rabbit
Isotype:	IgG
Clonality:	Polyclonal
Immunogen:	The immunogen for Anti-MYLK3 Antibody is: synthetic peptide directed towards the C-terminal region of Human MYLK3. Synthetic peptide located within the following region: LVKEKSCRMSTATQCLKHEWLNLPKASRSKTRLKSQLLLQKYIAQRKWK
Formulation:	Liquid. Purified antibody supplied in 1x PBS buffer with 0.09% (w/v) sodium azide and 2% sucrose. <i>Note that this product is shipped as lyophilized powder to China customers.</i>
Purification:	Affinity Purified
Conjugation:	Unconjugated
Storage:	Store at -20°C as received.
Stability:	Stable for 12 months from date of receipt.
Predicted Protein Size:	88 kDa
Gene Name:	myosin light chain kinase 3
Database Link:	NP_872299 Entrez Gene 91807 Human Q32MK0
Background:	Phosphorylation of cardiac myosin heavy chains and light chains by a kinase, such as MYLK3, potentiates the force and rate of cross-bridge recruitment in cardiac myocytes.
Synonyms:	caMLCK; MLCK; MLCK2
Note:	Immunogen sequence homology: Human: 100%; Dog: 86%; Horse: 86%; Pig: 79%; Bovine: 79%; Guinea pig: 79%

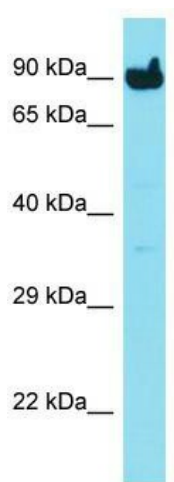


[View online »](#)

Protein Families: Druggable Genome, Protein Kinase

Protein Pathways: Calcium signaling pathway, Focal adhesion, Regulation of actin cytoskeleton, Vascular smooth muscle contraction

Product images:



Host: Rabbit; Target Name: MYLK3; Sample Tissue: HepG2 Whole Cell lysates; Antibody Dilution: 1.0 ug/ml.