

Product datasheet for **TA333397**

VSTM2A Rabbit Polyclonal Antibody

Product data:

Product Type:	Primary Antibodies
Applications:	WB
Recommended Dilution:	WB
Reactivity:	Human
Host:	Rabbit
Isotype:	IgG
Clonality:	Polyclonal
Immunogen:	The immunogen for Anti-VSTM2A Antibody: synthetic peptide directed towards the middle region of human VSTM2A. Synthetic peptide located within the following region: DISHKLQISKVRKKDEGLYECRVTDANYGELQEHAQAYLKVNSHARR
Formulation:	Liquid. Purified antibody supplied in 1x PBS buffer with 0.09% (w/v) sodium azide and 2% sucrose.
Purification:	Affinity Purified
Conjugation:	Unconjugated
Storage:	Store at -20°C as received.
Stability:	Stable for 12 months from date of receipt.
Predicted Protein Size:	26 kDa
Gene Name:	V-set and transmembrane domain containing 2A
Database Link:	NP_872352 Entrez Gene 222008 Human Q8TAG5



[View online »](#)

Background:

The specific function of this protein remains unknown. This pseudogene is a member of the cytochrome P450 gene superfamily. The cytochrome P450 proteins are monooxygenases which catalyze many reactions involved in drug metabolism and synthesis of cholesterol, steroids and other lipids. It is possible that, in rare cases, a combination of two SNPs in this gene may result in an open reading frame encoding a functional enzyme which metabolizes codeine to morphine. This locus is part of a cluster of cytochrome P450 genes on chromosome 22q13.1. PRIMARYREFSEQ_SPAN PRIMARY_IDENTIFIER PRIMARY_SPAN COMP 1-291 BX247885.11 23767-24057 c 292-463 BX247885.11 22893-23064 c 464-616 BX247885.11 22211-22363 c 617-777 BX247885.11 21962-22122 c 778-954 BX247885.11 21360-21536 c 955-1096 BX247885.11 21026-21167 c 1097-1284 BX247885.11 20644-20831 c 1285-1426 BX247885.11 20048-20189 c 1427-1680 BX247885.11 19696-19949 c

Synonyms:

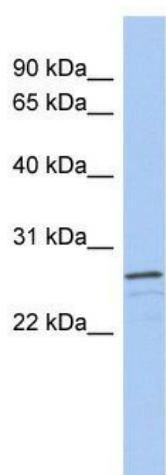
VSTM2

Note:

Immunogen sequence homology: Dog: 100%; Pig: 100%; Rat: 100%; Horse: 100%; Human: 100%; Mouse: 100%; Bovine: 100%; Rabbit: 100%; Guinea pig: 100%; Zebrafish: 86%

Protein Families:

Secreted Protein, Transmembrane

Product images:

WB Suggested Anti-VSTM2A Antibody Titration:
0.2-1 ug/ml; ELISA Titer: 1:312500; Positive
Control: Human brain